



RWE Offshore Wind

Agency Communications Plan

Document Date: January 5, 2024

Document Number: 005027653-01

Revision Number: 02

Classification: Public



Company	RWE Offshore Wind Holdings, LLC
Project	Offshore Wind Project, California
Package	N/A
Asset	Lease No. OCS-P 0561 (Lessee Company No. 15061)

Document Title	Agency Communications Plan
Ecodoc Number	005027653-01
Revision Number	02

This document and any information therein are confidential property of RWE Renewables and without infringement, neither the whole nor any extract may be disclosed, loaned, copied or used for manufacturing, provision of services or other purposes whatsoever without prior written consent of RWE Renewables, and no liability is accepted for loss or damage from any cause whatsoever from the use of the document. RWE Renewables retains the right to alter the document at any time unless a written statement to the contrary has been appended.

Date	Revision	Status / Reason for Issue
09 05 2023	00	Original version sent to Agencies prior to the RWE-hosted meeting
12 04 2023	01	Revisions based on official comments received from BOEM's review, and from feedback sent by other Agencies via email or verbally during the RWE-hosted meeting
01 05 2024	02	Final formatting completed, internal tracking document number added, and 508-compliance review conducted; document posted to RWE's website at: https://americas.rwe.com/ca-agency-comms-plan

Table of Contents

1.0	RWE’s Commitment to Communication and Engagement	1
2.0	Introduction	2
2.1	Agency Communications Plan	4
2.2	RWE Liaison for Agency Communications	4
2.3	Regulatory and Consulting Agency Contacts	5
3.0	Methods of Communication and Documentation	12
3.1	Coordination with Other Leaseholders and Plan Consistency	13
3.2	Project Stage-Specific Communications Actions	14
3.3	BOEM Guidance to Improve Permitting Efficiency	15
3.4	Assembly Bill (AB) 525 and Coordination with Federal Processes	16
3.5	Progress Reporting	16
3.6	Conflict Prevention and Resolution	16
4.0	Cited References and Guiding Documents	17

Table of Figures

Figure 1	Lease Area OCS-P 0561	3
----------	-----------------------------	---

Table of Tables

Table 1.	RWE Points of Contact (“Agency Liaison”)	4
Table 2.	Federal Regulatory and Consulting Agency POCs	6
Table 3.	State Regulatory and Consulting Agency POCs	8

Table of Appendices

- Appendix A: Site Investigation and Characterization
- Appendix B: Construction and Operations Plan (COP) to Environmental Impact Review
- Appendix C: Construction Activities
- Appendix D: Operations and Maintenance Activities
- Appendix E: Decommissioning

Glossary of Terms

Term	Definition
AB	Assembly Bill
ACHP	Advisory Council on Historic Preservation
ACP	Agency Communications Plan
BIA	Bureau of Indian Affairs
BOEM	Bureau of Ocean Energy Management
BSEE	Bureau of Safety and Environmental Enforcement
CAA	Clean Air Act
CAISO	California Independent System Operator
CalEPA	California Environmental Protection Agency
CAL FIRE	California Department of Forestry and Fire Protection
Caltrans	California Department of Transportation
CA-OPC	California Ocean Protection Council
CARB	California Air Resources Board
CCC	California Coastal Commission
CDFW	California Department of Fish and Wildlife
CEC	California Energy Commission
CEQA	California Environmental Quality Act
CESA	California Endangered Species Act
CFR	Code of Federal Regulations
CGS	California Geological Survey
CNRA	California Natural Resources Agency
COP	Construction and Operations Plan
CPCN	Certificate of Public Convenience and Necessity
CPUC	California Public Utilities Commission
CSLC	California State Lands Commission
CWA	Clean Water Act
CWDB	California Workforce Development Board
DOC	California Department of Conservation
DoD	(U.S.) Department of Defense
DOI	(U.S.) Department of the Interior
DTSC	(California) Department of Toxic Substances Control
DWR	(California) Department of Water Resources

Term	Definition
EFH	Essential Fish Habitat
EIR	Environmental Impact Report
EIS	Environmental Impact Statement
ESA	Endangered Species Act
FAA	Federal Aviation Administration
ft	feet
FCP	Fisheries Communications Plan
FWS	United States Fish and Wildlife Service
GO-Biz	California Governor's Office of Business and Economic Development
GW	gigawatt
HBHRCD	Humboldt Bay Harbor, Recreation & Conservation District
HRG	high resolution geophysical
km	kilometers
kV	kilovolt
Lease	Commercial Lease of Submerged Lands for Renewable Energy
LNM	Local Notice to Mariners
m	meters
mi	miles
MMPA	Marine Mammal Protection Act
Motus	Motus Wildlife Tracking System
NAHC	California Native American Heritage Commission
NATCP	Native American Tribes Communications Plan
NCUAQMD	North Coast Unified Air Quality Management District
NCRWQCB	North Coast Regional Water Quality Control Board
NEPA	National Environmental Policy Act
NHPA	National Historic Preservation Act
NMFS	(NOAA's) National Marine Fisheries Service (or NOAA Fisheries)
nm	nautical miles
NOAA	National Oceanic and Atmospheric Administration
NOI	Notice of Intent
NOP	Notice of Preparation
NPS	National Park Service
O&M	Operations and Maintenance
OCS	Outer Continental Shelf

Term	Definition
OCS-P	Outer Continental Shelf-Pacific
OCS-P 0561	RWE's offshore wind lease number
OHP	California State Office of Historic Preservation
OPR	(NOAA Fisheries) Office of Protected Resources
PATON	Private Aids to Navigation
PDE	Project Design Envelope
POC (or POCs)	Point(s) of contact
PTC	Permit to Construct
RHA	Rivers and Harbors Appropriations Act
ROD	Record of Decision
RWE	RWE Offshore Wind Holdings, LLC
SAP	Site Assessment Plan
SHPO	State Historic Preservation Officer
State Parks	(California) Department of Parks and Recreation
STEP	(California CEC) Siting, Transmission, and Environmental Protection
SWRCB	(California) State Water Resources Control Board
USACE	United States Army Corps of Engineers
USCG	United States Coast Guard
USEPA	United States Environmental Protection Agency
USGS	United States Geological Survey
WCR	(NOAA Fisheries) West Coast Region

1.0 RWE's Commitment to Communication and Engagement

The following principles reflect the commitment that RWE Offshore Wind Holdings, LLC (RWE) has to agency communication, and will guide the development, implementation, and future modifications of this communication plan. RWE is committed to:

- Proactive engagement with regulatory and consulting agencies, including early and often participation in meetings, discussions to address concerns, seeking clarifications, and offering insights and opinions on industry-related matters;
- Responsive to agency requests for information, documentation, or compliance-related inquiries;
- Providing transparent and timely reporting of relevant information, and ensuring that regulatory and consulting agencies receive prompt and accurate data and updates;
- Demonstrating adherence to relevant laws, regulatory and permit requirements, and guidelines and best practices set forth by regulatory and consulting agencies; and
- Continuous improvement and adaptiveness to changing regulatory landscapes, incorporating feedback from agency staff to enhance RWE's practices and alignment with evolving industry standards.
- With these commitments, RWE hopes to become a trusted offshore wind project developer and source of information for Federal and State agency representatives as we move forward together to permit, construct, and operate offshore wind projects in California.

2.0 Introduction

RWE is one of the world's leading renewable energy companies that is driving the expansion of green energy in more than 20 countries on five continents. RWE has a goal of creating 65 gigawatts (GW) of clean energy by 2030. The United States (U.S.) is a key part of RWE's renewable energy goals and has a current capacity of approximately 11 GW, which includes onshore and offshore wind farms, onshore solar, battery storage facilities, hydropower, and biomass. RWE is ranked second in the world in offshore wind with 19 offshore wind projects in operation. It is becoming the fastest-growing offshore wind company in the U.S. after recent acquisitions of approximately 5 GW of seabed capacity in the Pacific and Atlantic oceans, and the Gulf of Mexico.

In December 2022, RWE Offshore Wind Holdings, LLC successfully secured the lease rights to an area off the coast of Humboldt County as part of the California offshore wind lease auction. Designated as Outer Continental Shelf-Pacific (OCS-P) 0561, the Commercial Lease of Submerged Lands for Renewable Energy Development on the Outer Continental Shelf (Lease), executed by the Bureau of Ocean Energy Management (BOEM) and RWE, became effective on June 1, 2023¹.

The lease site is approximately 20 to 33 miles (mi; 32 to 53 kilometers [km] or 17 to 29 nautical miles [nm]) offshore of Eureka, California (Figure 1). It encompasses 63,338 acres of seabed in water depths ranging from 1,762 to 3,337 feet (ft; 537 to 1,017 meters [m]).

If fully developed, the renewable energy capacity of the Project is estimated at 1.6 GW, which could theoretically power more than 640,000 homes annually. The Project is defined as the Lease Area (the red outline in Figure 1), the potential area between the Lease Area and shore that will be considered for an export cable corridor, and the onshore interconnection to the electric grid, which have not been determined yet.

¹ The executed lease can be found here: https://www.boem.gov/sites/default/files/documents/renewable-energy/state-activities/2023-05-16_BOEM_RWE_POCSR_Lease-0561.pdf

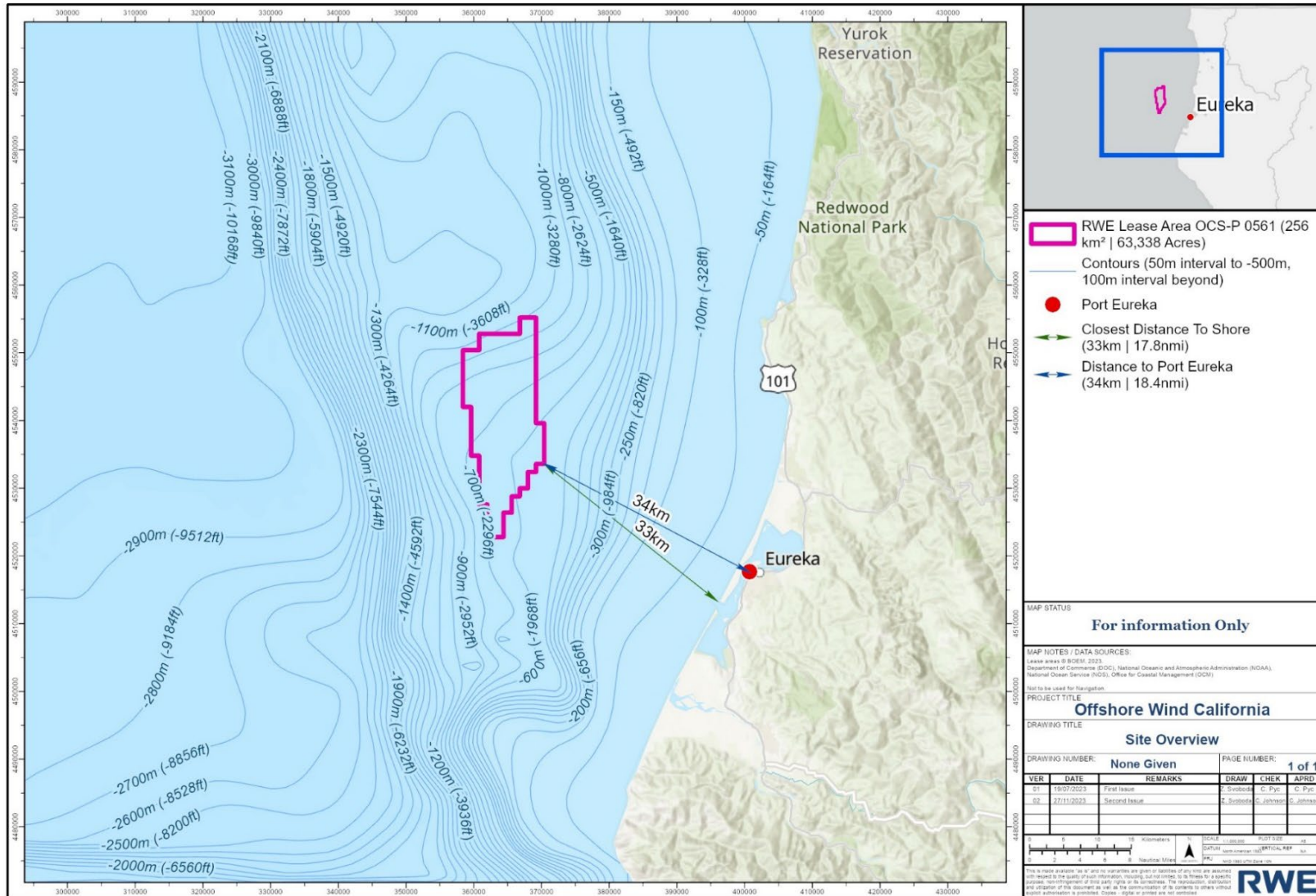


Figure 1 Lease Area OCS-P 0561

2.1 Agency Communications Plan

Lease Addendum “C” contains the specific terms, conditions, and stipulations that control RWE’s activities associated with offshore wind development inside the lease. Addendum “C”, 3 specify the requirements for engagement and communication throughout all stages of RWE’s Project.

The Lease requires that RWE develop three specific types of plans to facilitate this engagement effort over the lifetime of the Project. The three plans are the Native American Tribes Communications Plan (refer to Addendum “C”, 3.1.2), the Agency Communications Plan (Addendum “C”, 3.1.3), and the Fisheries Communications Plan (Addendum “C”, 6.2).

This document is the Agency Communications Plan (ACP), which describes the strategies RWE intends to use for communicating with Federal, state, and local agencies (including harbor districts (hereafter referred to as Agencies or Agency) with authority related to the Lease Area that outlines specific methods for engaging with and disseminating information to these Agencies (see Lease Addendum “C”, 3.1.3). Agency staff have been actively engaged during development of this document to ensure both the intent and text reflect the engagement objectives of all parties. Ongoing communications with agency collaborators will ensure that Agency feedback, lessons learned, and best practices are incorporated into the ACP on a regular basis.

A “Revision Summary” is included above on page ii. This provides a brief description of changes made to the document and the dates of each revision. Updated versions of the ACP will be provided to interested parties in electronic form, as requested, and has been posted to the Project’s website (<https://americas.rwe.com/ca-agency-comms-plan>) .

2.2 RWE Liaison for Agency Communications

The ACP outlines the process that RWE will use to communicate with and receive feedback from relevant Agencies. RWE has designated the following individuals as points of contact (POCs) for questions or comments on this document and for general inquiries related to Agency engagement. Agencies may contact the POCs at any time if they have questions about the Project or to request additional information regarding RWE activities.

Table 1. RWE Points of Contact (“Agency Liaison”)

Title	Name	Email	Phone
Permitting Manager	Carlaine Johnson	carlaine.johnson@rwe.com	(312) 241-8052
Director of Permitting & Environment	Cynthia Pyc	cynthia.pyc@rwe.com	(512) 500-1933

RWE's Permitting Manager for the Project will serve as the primary POC and Agency Liaison responsible for communicating Project activities and schedules to regulating and consulting agencies and providing feedback from agencies to RWE to inform Project decision-making. The purpose of designating a primary POC is to better facilitate communication between RWE and regulators. An alternate POC is provided in the event the Permitting Manager is not available. Agency

The Permitting Manager is also responsible for implementation of all aspects of the ACP including, but not limited to, the following:

- Preparing meeting materials (agendas, presentations, meeting summaries, etc.);
- Coordinating and leading in-person and virtual engagement meetings;
- Tracking action items and follow-up engagements and activities;
- Providing regular updates to agency staff;
- Answering questions from agencies regarding the Project and its activities; and
- Coordinating the involvement of RWE subject matter experts to provide answers, and conversely providing insight into agency concerns, recommendations, and perspectives to RWE.

2.3 Regulatory and Consulting Agency Contacts

There are several discrete stages in an offshore wind project including development (i.e., planning and permitting stage), construction, operations, and decommissioning. Not all agencies will be involved at each stage. Therefore, the approaches to agency engagement and the agencies involved in engagement will change or evolve over time as more information is collected, as design conditions are better known, and when operations commence.

RWE has initially identified Federal and State Agencies that are likely to have permitting and environmental review authority for this offshore wind energy Project. Preliminary lists of Federal and State Agency POCs that RWE will engage with per this ACP are provided in **Table 2** (Federal) and **Table 3** (State), below. These lists will be updated as feedback is received from the agencies, as the Project progresses, or as new laws are implemented.

A table for local government involvement, local ordinances, and delegated authorizations will be added to this section as the Project matures further, such as when offshore export cable corridors are being considered through State waters and to onshore points of interconnection with the electric grid.

Table 2. Federal Regulatory and Consulting Agency POCs

Federal Agencies and Authorities	Points of Contact
<p>Bureau of Ocean Energy Management (BOEM) Issues permits for OCS wind projects and is the lead agency under the National Environmental Policy Act (NEPA)</p>	<p>BOEM Pacific Regional Office Attn: Carlos Gomez, Project Coordinator 760 Paseo Camarillo, Suite 102 Camarillo, California 93010 (202) 361-3812 Juan.Gomez@boem.gov Deanna Meier, BOEM Renewable Energy Specialist (619) 993-2045 Deanna.Meier@boem.gov</p>
<p>Bureau of Safety and Environmental Enforcement (BSEE) Will be a consulting partner during the COP review stages; will perform safety and environmental oversight, compliance, and enforcement of the Project under 30 Code of Federal Regulations (CFR) Section 285</p>	<p>BSEE Pacific Region Attn: Bobby Kurtz, Regional Supervisor Office of Production and Development 760 Paseo Camarillo, Suite 102 Camarillo, CA 93010 (805) 384-6359 Bobby.Kurtz@bsee.gov Nathan Sikula, BSEE Pacific Region Nathan.Sinkula@bsee.gov</p>
<p>Department of Defense (DoD) Reviews offshore wind projects through the Clearinghouse to determine whether they pose a potential risk to military activities</p>	<p>U.S. Department of Defense Attn: Steve Sample, Executive Director, Military Aviation and Installation Assurance Siting Clearinghouse Office of the Assistant Secretary of Defense 3400 Defense Pentagon, Room 5C646 Washington, DC 20301-3400 Steve.Sample@acq.osd.mil osd.dod-siting-clearinghouse@mail.mil</p>
<p>Department of Defense (DoD) Per Lease Addendum "C", 4, RWE must establish and maintain early contact and coordination with the appropriate command headquarters to avoid or minimize the potential to conflict with, and minimize the potential effects of conflicts with, military operations</p>	<p>DoD Naval Base San Diego Attn: Anna Shepherd, Navy Region Southwest Community Plans and Liaison Officer 3455 Senn St., Bldg 72 San Diego, CA 92136 Anna.Shepherd4.civ@us.navy.mil</p>
<p>U.S. Army Corps of Engineers (USACE) Issues the Clean Water Act (CWA) Section 404 permit and the Rivers and Harbors Act (RHA) Section 10 permit</p>	<p>USACE South Pacific Division Attn: Brig. Gen. Antoinette Gant, Commander 450 Golden Gate Ave Rm 6672H 6th Floor San Francisco, CA 94102 (415) 503-6503 spd-pao@usace.army.mil</p>
<p>U.S. Coast Guard (USCG) Issues Local Notices to Mariners (LNM) to inform the mariner community of offshore activities, and issues permits for Private Aids to Navigation (PATON) for the placement of fixed structures on navigable waters</p>	<p>U.S. Coast Guard, Eleventh District Attn: CDR William J. George, Chief, Waterways Management Branch Coast Guard Island, Bldg #50-2 Alameda, CA 94501-5100 (510) 289-6733 William.J.George@uscg.mil</p>

Federal Agencies and Authorities	Points of Contact
<p>National Marine Fisheries Service (NOAA Fisheries or NMFS), Office of Protected Resources (OPR)</p> <p>Issues incidental take authorizations and permits under the Marine Mammal Protection Act (MMPA)</p>	<p>NOAA Fisheries OPR Attn: Jaclyn Daly 1315 East-West Highway Silver Spring, MD 20910 (301) 427-8401 Jaclyn.Daly@noaa.gov</p>
<p>National Marine Fisheries Service (NOAA Fisheries or NMFS), West Coast Region (WCR)</p> <p>Requires consultation for Essential Fish Habitat (EFH) and permits under the federal Endangered Species Act (ESA), where applicable</p>	<p>NOAA Fisheries WCR Attn: Lilah Isé, West Coast Offshore Wind Energy Coordinator / Senior Policy Advisor 501 W. Ocean Blvd, Suite 4200 Long Beach, CA 90802 (562) 505-7304 Jennifer.Ise@noaa.gov</p>
<p>U.S. Fish and Wildlife Service (USFWS)</p> <p>Issues incidental take authorizations and permits under the MMPA, the ESA (where applicable), and migratory birds</p>	<p>USFWS Pacific Region Attn: Stefanie Stavrakas, Regional Energy Coordinator 911 NE 11th Ave Portland, OR 97232 (503) 231-2262 Stefanie_Stavrakas@fws.gov</p> <p>USFWS Pacific Southwest Region (California, Nevada, and Klamath Basin, Oregon) Attn: Tracy Borneman, Ecologist Migratory Bird Program Tracy_Borneman@fws.gov</p>
<p>U.S. Environmental Protection Agency (USEPA)</p> <p>Has NEPA review authority under Section 309 of the Clean Air Act (CAA) and issues a permit under Section 328 of the CAA to control air pollutions from OCS sources to maintain federal and state ambient air quality standards</p>	<p>USEPA Region 9 Attn: Jason Gerdes, NEPA Coordinator Environmental Review Branch (TIP-2) 75 Hawthorne Street San Francisco, CA 94105 (415) 947-4221 Gerdes.Jason@epa.gov</p> <p>Po-Chieh Ting, USEPA Air Permitting Specialist Ting.PoChieh@epa.gov</p>
<p>National Park Service (NPS)</p> <p>Oversees the care of National Parks and will be consulted for activities that may potentially affect National Park lands</p>	<p>NPS Pacific West Region Attn: Irina Irvine, Ocean and Coastal Resources Program Coordinator 1201 Oakridge Drive, Suite 250 Fort Collins, CO 80525 (970) 225-3500 Irina_Irvine@nps.gov</p>
<p>Federal Aviation Administration (FAA)</p> <p>Has jurisdiction over U.S. territorial airspace (12 nm offshore) and determines whether activities that are over 200 feet in height are a hazard to air traffic</p>	<p>FAA Obstruction Evaluation/Airport Airspace Manager Attn: Cindy Whitten, Obstruction Evaluation Wind Turbine Team Manager 800 Independence Ave SW Washington, DC 20591 (816) 329-2528 OEGroup@faa.gov</p>

Federal Agencies and Authorities	Points of Contact
<p>U.S. Geological Survey (USGS) Conducts scientific studies relevant to offshore wind projects</p>	<p>USGS Southwest Region Attn: Eric Reichard, Regional Director 2800 Cottage Way Sacramento, CA 95825 Egreich@usgs.gov</p>
<p>Advisory Council on Historic Preservation (ACHP) Administers the requirements of Section 106 of the National Historic Preservation Act (NHPA), a review process that ensures historic properties are considered during the development of any federal projects. ACHP's Office of Federal Agency Programs (OFAP) coordinates this responsibility and works with federal agencies to provide technical assistance, guidance, and training on how to use the Section 106 process.</p>	<p>ACHP Office of Federal Agency Programs Federal Property Management Section Attn: Christopher Daniel, Program Analyst 401 F Street NW, Suite 308, Washington, DC 20001 (202) 517-0223 Cdaniel@achp.gov Christopher Koepfel, ACHP Office of Federal Agency Programs, Assistant Director (202) 517-0222 Ckoepfel@achp.gov</p>
<p>Bureau of Indian Affairs (BIA) Provides contact information for Tribal Nations</p>	<p>BIA Pacific Regional Office Attn: Amy Dutschke, Regional Director 2800 Cottage Way, Suite W-2820 Sacramento, CA, 95825 (916) 978-6000 Amy.Dutschke@bia.gov</p>

A preliminary set of State-designated POCs is listed in **Table 3**. As the Project continues to develop or other activities associated with the proposed development are further refined, then additional Agencies or changes to these POCs will be identified and included in updates to this plan.

Table 3. State Regulatory and Consulting Agency POCs

State Agencies and Authorities	Points of Contact
<p>Governor's Office of Planning and Research Coordinates with DoD on state energy and environmental policy, and runs the State Clearinghouse, which coordinates state agency reviews of California Environmental Quality Act (CEQA) and NEPA documents</p>	<p>Governor's Office of Planning and Research Attn: Samuel Assefa, State Clearinghouse Director 1400 Tenth Street Sacramento, CA 95814 (916) 445-0613 state.clearinghouse@opr.ca.gov</p>
<p>Governor's Office of Business and Economic Development (GO-Biz) Serves as the state's lead on job growth, economic development, and business assistance efforts</p>	<p>GO-Biz Attn: Dee Dee Myers, Senior Advisor and Director 1325 J St Ste 1800 Sacramento, CA 95814 (877) 345-4633 Deedee.Myers@gobiz.ca.gov</p>

State Agencies and Authorities	Points of Contact
<p>California State Lands Commission (CSLC)</p> <p>Issues leases or permits for uses of sovereign land under the Public Trust Doctrine and for geophysical surveys (www.slc.ca.gov/ogpp); the lead permitting authority under CEQA; and has authority at certain facilities for oil spill prevention and marine invasive species prevention</p>	<p>California State Lands Commission Attn: Amy Vierra, Senior Environmental Scientist 100 Howe Ave, Suite 100 South Sacramento CA 95825 (916) 562-0025 Amy.Vierra@slc.ca.gov</p> <p>Jennifer Mattox, CSLC, Climate Adaptation and Special Initiatives Lead (916) 574-0748 Jennifer.Mattox@slc.ca.gov</p>
<p>California Coastal Commission (CCC)</p> <p>Conducts the coastal consistency review of OCS projects under the Coastal Zone Management Act (CZMA) for those activities that may impact California coastal resources</p>	<p>California Coastal Commission Attn: Holly Wyer, Senior Environmental Scientist Energy, Ocean Resources, Federal Consistency and Technical Services Division 455 Market St, Suite 228 San Francisco, CA 94105-2219 (805) 904-5245 Holly.Wyer@coastal.ca.gov</p> <p>Heather McNair, CCC, Environmental Scientist Heather.Mcnair@coastal.ca.gov</p>
<p>California Energy Commission (CEC)</p> <p>Serves as the primary energy policy and planning agency for the advancement of the state's climate and energy goals</p>	<p>California Energy Commission Siting, Transmission, and Environmental Protection (STEP) Attn: Elizabeth Huber, Director 715 P St Sacramento, CA 95814 (916) 776-0609 offshorewind@energy.ca.gov</p> <p>Elizabeth Barminski and Eli Harland, CEC offshorewind@energy.ca.gov</p>
<p>California Department of Fish and Wildlife (CDFW)</p> <p>Issues authorizations under the California Endangered Species Act (CESA) for state-protected species and issues Scientific Collecting Permits and Lake and Streambed Alteration Agreements</p>	<p>California Department of Fish and Wildlife Attn: Becky Ota, Habitat Conservation Program Manager P.O. Box 944209 Sacramento, CA 94244-2090 (916) 445-0411</p>
<p>California Natural Resources Agency (CNRA) Ocean Protection Council (CA-OPC)</p> <p>Collaborates with state and federal agencies and other partners particularly in supporting studies that inform decision-making and facilitating coordination with OPC's partner agencies, especially in matters concerning environmental considerations in the offshore wind sector</p>	<p>California Natural Resources Agency Attn: Jenn Eckerle, CNRA Deputy Secretary for Oceans and Coastal Policy and OPC Executive Director 715 P St, 20th Floor Sacramento, CA 95814 (916) 653-5656 Jenn.Eckerle@resources.ca.gov</p> <p>Yi-Hui Wang, CNRA, Offshore Wind Program Manager Yi-Hui.Wang@resources.ca.gov</p> <p>Justine Kimball, CNRA, Senior Climate Change Program Manager Justine.Kimball@resources.ca.gov</p>

State Agencies and Authorities	Points of Contact
<p>Environmental Protection Agency (CalEPA)</p> <p>Oversees a number of entities including the California Air Resources Board, the Department of Resources Recycling and Recovery (CalRecycle), and the State Water Resources Control Board</p>	<p>CalEPA</p> <p>Attn: Shereen D'Souza, Deputy Secretary for Climate Policy and Intergovernmental Relations</p> <p>1001 I St</p> <p>Sacramento, CA 95814</p> <p>(916) 883-0958</p> <p>cepacomm@calepa.ca.gov</p>
<p>California Department of Water Resources (DWR)</p> <p>Responsible for managing and protecting California's water</p>	<p>California Department of Water Resources</p> <p>Attn: Karla Nemeth, Director</p> <p>P.O. Box 942836</p> <p>Sacramento, CA 94236-0001</p> <p>(916) 653-5791</p> <p>Lea.Garrison@water.ca.gov</p>
<p>California State Office of Historic Preservation (OHP)</p> <p>Reviews projects pursuant to Section 106 of NHPA and state programs and projects pursuant to Sections 5024 and 5024.5 of the Public Resources Code</p>	<p>California State Office of Historic Preservation</p> <p>Attn: Julianne Polanco, State Historic Preservation Officer (SHPO)</p> <p>1725 23rd St, Suite 100</p> <p>Sacramento, CA 95816</p> <p>(916) 445-7000</p> <p>Monica.Newman@parks.ca.gov</p>
<p>California Native American Heritage Commission (NAHC)²</p> <p>Responsible for identifying, cataloguing, and protecting Native American cultural resources</p>	<p>California Native American Heritage Commission</p> <p>Attn: Cameron Vela</p> <p>1550 Harbor Blvd, Suite 100</p> <p>West Sacramento, CA 95691</p> <p>(916) 573-0168</p> <p>Cameron.Vela@nahc.ca.gov</p>
<p>California Air Resources Board (CARB)</p> <p>Regulates vessels, mobile sources, and some construction permits</p>	<p>California Air Resources Board</p> <p>Attn: Dr. Steven Cliff, Executive Director</p> <p>P.O. Box 2815</p> <p>Sacramento, CA 95812</p> <p>(916) 322-5594</p> <p>cotb@arb.ca.gov</p>
<p>California State Water Resources Control Board (SWRCB)</p> <p>Requires either a Certificate of Public Convenience and Necessity (CPCN; for facilities 200 kilovolts [kV] and above) or a Permit to Construct (PTC; for facilities 50 kV to 200 kV)</p>	<p>California State Water Resources Control Board</p> <p>Attn: Eileen Sobeck, Executive Director</p> <p>P.O. Box 100</p> <p>Sacramento, CA 95812-0100</p> <p>(916) 341-5599</p> <p>Eileen.Sobeck@waterboards.ca.gov</p>
<p>North Coast Regional Water Quality Control Board (NCRWQCB)</p> <p>Protects the region's waters while recognizing local differences in climate, topography, geology and hydrology</p>	<p>North Coast Regional Water Quality Control Board</p> <p>Attn: Valerie Quinto, Executive Officer</p> <p>5550 Skylane Blvd, Suite A</p> <p>Santa Rosa, CA 95403</p> <p>(707) 576-2220</p> <p>Valerie.Quinto@waterboards.ca.gov</p>

² It is expected that RWE coordination efforts with NAHC would be through the NATCP but is listed here for a full representation of state agencies involved in offshore wind.

State Agencies and Authorities	Points of Contact
<p>North Coast Unified Air Quality Management District (NCUAQMD)</p> <p>Will likely issue the air pollution control permit under the federal Clean Air Act, if the Project falls within the NCUAQMD's boundaries; NCUAQMD also issues some construction related permits in the form of "authority to construct and temporary permits to operate," which are converted into "permits to operate" once constructed</p>	<p>North Coast Unified Air Quality Management District Attn: Brian Wilson, Executive Director & Air Pollution Control Officer 707 L Street Eureka, CA 95501 (707) 443-3093 ext. 110 support@ncuaqmd.org</p> <p>Cameron Purchio, NCUAQMD, Air Quality Engineer (707) 443-3093 ext. 119 CPurchio@ncuaqmd.org</p>
<p>California Department of Toxic Substances Control (DTSC)</p> <p>Protects Californians and their environment from exposure to hazardous wastes by enforcing hazardous waste laws and regulations</p>	<p>California Department of Toxic Substances Control Attn: Wayne Lorentzen, Division Chief, Permitting P.O. Box 806 Sacramento, CA 95812-0806 (916) 324-1826 Wayne.Lorentzen@dtsc.ca.gov</p>
<p>Public Utilities Commission (CPUC)</p> <p>Authorizes electric utility rates and procurement, among other responsibilities associated with meeting the state's goal of 100 percent zero-carbon electricity by 2045</p>	<p>California Public Utilities Commission Kourtney Vaccaro, Chief of Staff 505 Van Ness Avenue San Francisco, CA 94102 (415) 703-2403 Kourtney.Vaccaro@cpuc.ca.gov</p>
<p>California Independent System Operator (CAISO)</p> <p>Requires an interconnection agreement for new electric generating facilities</p>	<p>California Independent System Operator Attn: Linda Wright, Lead Interconnection Specialist P.O. Box 639014 Folsom, CA 95630 (916) 351-4400 LRinfo@caiso.com</p>
<p>Department of Parks and Recreation (State Parks)</p> <p>Protects and preserves culturally and environmentally sensitive structures and habitats, threatened plant and animal species, ancient Native American sites, historic structures, and artifacts</p>	<p>California State Parks Attn: Armando Quintero, Director P.O. Box 942896 Sacramento, CA 94296-0001 (916) 653-9901 publicinfo@parks.ca.gov</p>
<p>California Department of Transportation (Caltrans)</p> <p>Requires an encroachment permit for work within state-owned rights-of-way</p>	<p>Caltrans District 1 Attn: Matthew Brady, Director P. O. Box 3700 Eureka, CA 95502-3700 (707) 445-6385 district.1.pio@dot.ca.gov</p>
<p>California Department of Forestry and Fire Protection (CAL FIRE)</p> <p>Integrates fire protection, natural resource management, and fire prevention under a single mission</p>	<p>CAL FIRE Northern Region Attn: Kurt McCray, Unit Chief 118 S. Fortuna Blvd Fortuna, CA 95540 (707) 725-4413 Kurt.Mccray@fire.ca.gov</p>

State Agencies and Authorities	Points of Contact
<p>California Workforce Development Board (CWDB) Provides oversight and continuous improvement of the workforce system in California</p>	<p>California Workforce Development Board Attn: Tim Rainey, Executive Director 800 Capitol Mall, Suite 1022 Sacramento CA 95814 (916) 657-1440 boardpubliccomment@cwdb.ca.gov</p>
<p>Department of Conservation (DOC) Oversees five divisions to foster the wise use and conservation of energy, land, and mineral resources</p>	<p>California Department of Conservation Attn: David Shabazian, Director 2nd: Jeremy Lancaster, Associate State Geologist 715 P Street, MS 1900 Sacramento, CA 95814 (916) 322-1080 cqshq@conservation.ca.gov</p>
<p>California Geological Survey (CGS) Provides scientific products and services about the state's geology, seismology, and minerals that affect the health, safety, and business interests of the people of California</p>	<p>California Geological Survey Attn: Jeremy Lancaster, Associate State Geologist 715 P Street, MS 1900 Sacramento, CA 95814 (916) 204-1710 Jeremy.Lancaster@conservation.ca.gov</p>
<p>Humboldt Bay Harbor, Recreation and Conservation District (HBHRCD or Humboldt Bay Harbor District) The governing body of the Port of Humboldt Bay</p>	<p>Humboldt Bay Harbor District Attn: Larry Oetker, Executive Director P.O. Box 1030 Eureka, California 95502-1030 (707) 443-0801 ext. 115 LOetker@humboldtby.org Rob Holmlund, HBHRCD, Director of Development (707) 443-0801 ext.122 RHolmlund@humboldtby.org</p>

3.0 Methods of Communication and Documentation

The ACP details the procedures and protocols that RWE will use to engage with, share Project information, and solicit feedback from Federal and State agencies to develop and permit a Project that avoids, minimizes, and/or mitigates conflicts with other ocean users and impacts to environmental, social, and cultural resources.

RWE recognizes that agency time is valuable. The overall intent of this plan is to outline actions that enable meaningful communication, coordination, and collaboration without being overly burdensome. RWE anticipates employing the following forms of agency communication, unless otherwise requested:

- Regular, agreed upon, cadence of meetings (mostly virtual but with semi-regular face-to-face meetings), depending on the stage of development, construction, and operation;

- Timely notification of upcoming meetings or milestones by email to the points of contact listed in this document;
- Preparing meeting notes that summarize discussions and outcomes or action items;
- Distributing Project documentation and meeting notes via email;
- Maintaining a website that includes current information about Project activities; and
- Uploading public files and other information to the website.

Established forms of communication will ensure early and ongoing information sharing, focused discussion of potential issues, and collaborative identification of solutions with the goal to improve the quality and efficiency of various agency decision-making processes.

At any time, the designated Agency POCs may request to change the frequency and method of their participation or choose not to participate in this plan. If this happens, this will not affect that Agency's regulatory authorities in any way.

3.1 Coordination with Other Leaseholders and Plan Consistency

RWE is required to coordinate, to the extent practicable, with the other California leaseholders on engagement activities. This may include coordination with the three leaseholders offshore Morro Bay, which are about 500 miles south of the RWE lease site, and with Vineyard Offshore (lease number OCS-P 0562), which holds the offshore wind lease adjacent to the RWE Lease Area. RWE will participate as appropriate with other leaseholders to help minimize duplication of activities.

RWE will consult with the agencies on how to best accommodate their needs and ensure effective communication. To start this process, RWE hosted a meeting on October 28, 2023 (i.e., within 120 days from the effective date of the Lease on June 1, 2023) with the Agency POCs listed in Section 2.3 that have planning and/or permitting roles and/or resource expertise. This was a high-level meeting to introduce the Project and offer an opportunity to answer questions. The primary objective of this first meeting was to solicit feedback on the ACP and request that the Agencies confirm their designated POC(s) for communications with RWE.

RWE will develop a schedule for future regular meetings or working sessions to discuss specific area(s) that may involve technical experts who have a deeper knowledge of the subject matter.

RWE is willing to meet virtually or in person but expects that a hybrid approach will better accommodate staff and reduce scheduling conflicts.

As noted in Lease Addendum “C”, 3, it is expected there will be Agencies or their staff listed in the ACP that will also be identified within RWE’s Fisheries Communications Plan (FCP) and the RWE Native American Tribes Communications Plan (NATCP), or they may be involved in the review of one or more other plans (e.g., site investigation plans, monitoring plans, contingency plans, etc.). RWE recognizes that the development of an offshore wind project requires input from many stakeholders with various interests. Any input provided on the Project by the agencies, including any inconsistencies across Project plans, will be noted by RWE and addressed across the full Project spectrum. Likewise, RWE expects that any staff or subject matter expert who is providing support to one of the Agencies listed, will maintain close coordination and communication with that Agency’s POC to ensure consistency toward RWE’s Project as well as to the other leaseholders and their projects.

RWE’s three communications plans were developed in close coordination with each other as they will necessarily have overlapping engagements. Currently, the FCP is being developed as a joint document with the adjacent leaseholder, Vineyard Offshore, because of requests heard by stakeholders to minimize reviews of multiple plans. RWE is also being deliberate in its preparation of the NATCP and is consulting with the Tribes and Tribal Nations along the North Coast to develop that plan.

The ACP is intended to maintain consistency in communications with the Survey Plan, which is another type of plan described in Lease Addendum “C”, 2, or when other types of plans are developed throughout the Project stages (refer to Appendix A through E).

3.2 Project Stage-Specific Communications Actions

Attached to this ACP are five appendices representing each stage, in the order they occur, of an offshore wind project. Stage-specific appendices provide a breakdown listing the discrete actions that RWE will take to coordinate and engage with relevant Agencies, which may involve a larger listing of Agency staff in these engagements. The five stage-specific appendices are:

- Site Assessment and Characterization (Appendix A),
- Construction and Operations Plan (COP) to Environmental Impact Review (Appendix B),
- Construction Activities (Appendix C),
- Operations and Maintenance (O&M) Activities (Appendix D), and
- Decommissioning (Appendix E).

The lists of names in the appendices are intended to reach a wider group (if that is the Agency's desire) while still maintaining a single POC within each Agency. It is anticipated that the individuals listed in the appendices would receive informal Project updates or notices about specific meetings on issues, but that the primary contacts listed in Section 2.3 will be the ones responsible for wider distribution of formal communications received from RWE.

The intent of this approach is to maintain an organized structure for transparency and awareness while reducing bottlenecks for the distribution of Project updates or progress reports or to timely address pertinent issues.

The ACP is meant to be a guide for RWE and the agencies to foster effective communications while not interfering or limiting coordination efforts in any way. If the ACP is hindering engagements or the structure requires modification to better accommodate an agency's needs, then that feedback should be communicated to the RWE Agency Liaison listed in Section 2.2 and the ACP will be updated accordingly.

RWE is committed to an adaptive ACP that is responsive to changing conditions of Project activities as well as to individual Agency needs and resources. There will be stages of this Project that will require various levels of engagement and possibly different Agency staff to be notified depending on the issues. The result may be fewer engagement activities during periods of low activity and more engagement activities during periods of increased activity. As a result, RWE will endeavor to tailor the types and frequency of engagement activities to each Agency's specific needs, their feedback to the flow of information, and to the issues requiring attention during the different Project stages and as the Project matures. This is intended to create a transparent process for interested parties and to allow for meaningful engagement.

3.3 BOEM Guidance to Improve Permitting Efficiency

This ACP aligns with BOEM guidelines, referred to as the "NOI Checklist," which is intended to increase transparency and consistency of offshore wind projects with Tribes, other government partners, and interested stakeholders (refer to Appendix B of this ACP for a description of the NOI or "Notice of Intent" process to prepare a NEPA document).

The NOI Checklist details the requirements for information that BOEM expects to be included in a COP submission before BOEM formally initiates the NEPA document through the publication of an NOI.

Attachment 2 of the NOI Checklist contains the “Recommendations for Engagement” during the “Pre-NOI” stage.³ These recommendations include a template of a schedule that could be used for interagency engagement during the various development stages as described in Appendix A through E of this ACP. The Recommendations for Engagement will complement and will be used to support the implementation of the ACP with the Agencies, and will be used to address issues of overlapping interests under Federal and State jurisdictional authorities.

3.4 Assembly Bill (AB) 525 and Coordination with Federal Processes

This ACP also aligns with actions taken by the State to coordinate and streamline actions associated with Federal requirements under the site assessments, environmental reviews, and project permitting. This includes California’s efforts to create a permitting roadmap as required under Assembly Bill (AB) 525. This roadmap is in progress and involves the coordination of State Agencies and Federal counterparts, as necessary.

It has been noted in public workshops for the permitting roadmap process that State Agency review panels could be developed for spotting issues early on and helping to maintain a consistent approach for certain information gathering that will be needed in later stages of State agency environmental analyses. Discussions on avoidance and minimization practices, including science, monitoring, and adaptive management approaches, should be coordinated with the leaseholders and Agencies early to facilitate the development of Project-specific mitigation measures.

3.5 Progress Reporting

Progress Reports are required under Lease Addendum “C”, 3. These semi-annual reports will be submitted to BOEM throughout the site assessment term and the operations term, if a COP is approved. Progress reports will include a brief narrative of activities that occurred during the reporting period and activities expected in the upcoming reporting period. The reports will be submitted to BOEM for review and then to the agency POCs as part of the engagements described by this ACP. The reports will be made public except for any privileged and confidential information.

The Progress Reports are a way to inform Agencies of evolving Project design or Project issues emerging from other communications that are relevant to Agency considerations, particularly from Tribes/Tribal Nations and other stakeholders.

3.6 Conflict Prevention and Resolution

³ The NOI Checklist and Recommendations for Engagement (Attachment 2) can be found at: <https://www.boem.gov/sites/default/files/documents/renewable-energy/state-activities/BOEM%20NOI%20Checklist.pdf>

RWE plans to seek input from expert Agencies on potential project impacts and will include measures to avoid, minimize, or mitigate for such impacts where practicable and appropriate.

In recognition that it may not be possible to avoid all conflicts, the ACP allows a way in which Agencies and RWE can resolve conflicts. A mutually respectful conflict resolution approach ensures that the parties will: fully engage in identifying conflicts early in the process, work cooperatively toward understanding and addressing concerns, and create meaningful suggestions to allow the group to reach consensus on resolving the conflict(s).

A possible collaborative problem-solving approach can be found in Burton and Sandole (1986), which outlines the following six-step process:

1. Define the primary needs surrounding the conflict.
2. Brainstorm possible solutions.
3. Choose solutions that meet the needs of both parties.
4. Create an agenda delineating who will assume each task.
5. Implement the plan.
6. Evaluate the solutions, and reevaluate, if necessary.

The outline above is a simplified approach to problem solving; therefore, refinement of these procedures will be made if they are needed to address a conflict that cannot be easily resolved.

4.0 Cited References and Guiding Documents

Bureau of Ocean Energy Management, 2023. Draft Guidelines and Instructions for Native American Tribes Communications Plan Development Required by BOEM New York Bight Leases (OCS-A 0537–0544) and Carolina Long Bay Leases (OCS-A 0545–0546). Draft guidance issued February 2023 (https://www.boem.gov/sites/default/files/documents/renewable-energy/DRAFT%20NATCP%20Guidance%20for%20NYB%20and%20CLB%20Less%20ees_Feb2023_0.pdf).

Bureau of Ocean Energy Management, 2022. Offshore Wind Lease Issuance, Site Characterization, and Site Assessment: Central and Northern California; Biological Assessment Endangered and Threatened Species and Essential Fish Habitat Assessment. Prepared for the National Marine Fisheries Service and U.S. Fish and

Wildlife Service in accordance with Section 7(c) of the Endangered Species Act of 1973, and the Magnuson-Stevens Fishery Conservation and Management Act as Amended (https://www.boem.gov/sites/default/files/documents/renewable-energy/state-activities/Final%20CA%20Ren%20lease%20issuance%20BA_EFH_07222022_Clean_508%20compliant%20Final.pdf).

Bureau of Ocean Energy Management, 2022. Humboldt Wind Energy Area Final Environmental Assessment, Appendices, and Finding of No Significant Impact (FONSI). Published May 2022 (<https://www.boem.gov/renewable-energy/state-activities/humboldt-wind-energy-final-ea>).

Bureau of Ocean Energy Management, 2020. Information Guidelines for a Renewable Energy Construction and Operations Plan (COP), Version 4.0, May 27, 2020. Prepared by the U.S. Department of the Interior, Office of Renewable Energy Programs (<https://www.boem.gov/sites/default/files/documents/about-boem/COP%20Guidelines.pdf>).

Burton, John W. and Sandole, Dennis J.D., 1986. Generic Theory: The Basis of Conflict Resolution. *Negotiation Journal*, October 1986 (<https://doi.org/10.1111/j.1571-9979.1986.tb00373>).

California Coastal Commission's Consistency Determination CD-0001-22, (Humboldt Wind Energy Area). Letter from Holly Wyer, CCC Senior Environmental Scientist, to Doug Boren, BOEM Pacific Region Director, dated April 25, 2022 (https://documents.coastal.ca.gov/assets/upcoming-projects/offshore-wind/CD-0001-22_Concurrence%20Letter.pdf).

California State Lands Commission, 2023. Tribal Consultation Policy, adopted in August 2016 (<https://www.slc.ca.gov/wp-content/uploads/2018/07/Tribal.pdf>).

Executive Office of the President, 2023. Executive Order 13985 on Further Advancing Racial Equity and Support for Underserved Communities Through The Federal Government, as of February 16, 2023 (<https://www.whitehouse.gov/briefing-room/presidential-actions/2023/02/16/executive-order-on-further-advancing-racial-equity-and-support-for-underserved-communities-through-the-federal-government/>).

Jones, Melissa, Kristy Chew, Eli Harland, and Jim Bartridge, 2023. Assembly Bill 525 Offshore Wind Energy Permitting Roadmap. California Energy Commission. Publication Number: CEC-700-2023-004 (<https://www.energy.ca.gov/resources/all-publications>).

National Marine Fisheries Service, 2022. Endangered Species Act Section 7(a)(2) Concurrence Letter and Magnuson-Stevens Fishery Conservation and Management Act Essential Fish Habitat Response for the Bureau of Ocean Energy Management's Offshore Wind Lease Issuance, Site Characterization and Assessment for the Morro

Bay and Humboldt Wind Energy Areas. Letter from Dan Lawson, NMFS Long Beach Office Branch Chief, to Lisa Gilbane, BOEM Pacific Region Section Chief, dated September 21, 2022 (<https://www.boem.gov/sites/default/files/documents/renewable-energy/state-activities/LOC-EFH%20for%20OSW%20leases%20in%20CA.pdf>).

Appendix A

Site Investigation and Characterization

During RWE's pre-construction site investigation and characterization stage, anticipated to take three to five years, RWE will develop Survey Plans describing proposed activities required by BOEM to assess the metocean and seabed conditions of the offshore wind Lease Area and the associated export cable corridor(s). The information collected during this stage will support Project engineering design and inform future Project stages. The site investigation and characterization Survey Plans may include some or all of the following activities:

- High resolution geophysical (HRG) data acquisition using equipment such as side scan sonar, sub-bottom profilers, etc.
- Geotechnical surveys such as coring for sediment analysis
- Benthic surveys including sampling techniques such as sediment grabs and video tows
- Other offshore surveys (marine mammals, avian species, fisheries)

Survey Plans will describe these various survey efforts generally for a one year period, but may extend to more than one year if survey effort for a longer period of time is known. Survey Plans will be updated and re-submitted to BOEM for review if techniques or locations change.

As required in Lease Addendum "C", 2, Survey Plan(s) will be submitted to BOEM at least 90 days before commencing survey activities. Lease Addendum "C", 5.6 requires the coordination of the Survey Plan(s) with the CCC and other relevant agency staff.

A site assessment plan (SAP) may also be submitted to BOEM in support of the installation of metocean buoys that are placed by RWE within the Lease Area to collect meteorologic and oceanographic information.

As site investigation and characterization data are collected and analyzed, RWE will begin to define the Project parameters including possible export cable corridor routes, landfall location(s), and onshore facilities. RWE will provide regular updates to the Agencies on the proposed Project and seek feedback on potential alternatives that could avoid, minimize, and/or mitigate impacts to environmental, social, and/or cultural resources.

A.1 Agency Engagement during Site Investigation and Characterization

- RWE will coordinate its survey plan and SAP submissions with BOEM and CCC to ensure that activities described in the survey plan and SAP submissions minimize impacts to coastal resources and that the submissions provide the data and information necessary for future consistency certifications, as appropriate.

- RWE will provide Agencies ample opportunity to review and comment on Survey Plans, including design considerations for benthic habitat and biological surveys, during regular meetings and through Plan document submittals.
- RWE will provide BOEM-relevant plans (i.e., anchoring plan, critical operations and curtailment plan [COCP], etc.) prior to start of site assessment and survey activities.
- RWE and Agencies will discuss opportunities for collaboration during site characterization studies and surveys (e.g., incidental collection of biological data).
- RWE will provide the Agencies with regular updates on timelines associated with site investigations including benthic and biological surveys.
- Agencies will submit information requests and questions to RWE, which RWE will address in a timely manner.
- Agencies will provide feedback to RWE during regular meetings to inform site investigation survey objectives and methods of data collection to meet those objectives.
- RWE will coordinate with Agencies as survey or study activities get underway and provide required notifications in advance of G&G surveys.
- RWE will communicate survey vessel movements to the appropriate Agencies, as required.
- RWE will make appropriate notifications if a contingency plan is activated.
- RWE will coordinate, if applicable, on the installation of Motus Wildlife Tracking System (Motus) stations on meteorological or environmental data buoys in coordination with USFWS and other agencies.
- RWE will discuss opportunities and the mechanisms for data sharing through the use of data sharing agreements with the Agencies or the use of an appropriate online viewer.
- RWE will report any sensitive species encounters to the appropriate Agencies consistent any Federal and State approvals or as required by law.
- RWE will communicate regarding material changes to Project development activities.
- RWE will summarize meetings and other actions in its progress reports to BOEM.
- RWE will maintain its website with current Project information including the current version of this ACP.

- RWE will conduct a review of the ACP contact list with the Agencies and update it, as needed, and prior to when the next stage of the Project begins in Appendix B.

A.2 Distribution List During Site Investigation and Characterization

This table below is intended to provide the full listing of Agency contacts who will receive information during the Site Investigation and Characterization stage. Information distributed by RWE will include the Project’s semi-annual progress reports, which includes coordination meetings that were conducted in the current reporting period and anticipated in the next period.

Table A-1. Distribution List During Site Investigation and Characterization

Name	Agency	Phone	Email
Carlos Gomez	BOEM	(202) 361-3812	juan.gomez@boem.gov
Deana Meier	BOEM	(619) 993-2045	Deana.meier@boem.gov
Bobby Kurtz	BSEE	(805) 384-6359	Bobby.Kurtz@bsee.gov
Nathan Sikula	BSEE	N/A	nathan.sinkula@bsee.gov
Holly Wyer	CCC	(415) 904-5245	holly.wyer@coastal.ca.gov
Heather McNair	CCC	N/A	heather.mcnair@coastal.ca.gov
Becky Ota	CDFW	(650) 631-6789	TBD
Eric Wilkins	CDFW	(805) 594-6172	TBD
Jay Staton	CDFW	(707) 951-2049	TBD
Crystal D’Souza	CDFW	(916) 809-3928	TBD
Rhiannon Mulligan	CDFW	(916) 594-6360	TBD
Jeremy Lancaster	CGS	(916) 204-1710	Jeremy.Lancaster@conservation.ca.gov
David Shabazian	DOC	(916) 322-1080	webmaster@conservation.ca.gov

Table A-2. Engagement Frequency and Location

Engagement Summary During Site Investigation and Characterization	
Purpose of Engagement:	A single interagency meeting for the purpose of receiving feedback on the Agency Communications Plan
Agencies To Be Contacted:	All those listed in Section 2.3, Tables 2 and 3
Meeting Location(s):	Hybrid (virtual and in-person)

Engagement Summary During Site Investigation and Characterization

Frequency:	One meeting with each agency was required by September 29, 2023; additional meetings can be scheduled, as requested, or as updates are needed to the ACP
Purpose of Engagement:	Annual interagency meetings to discuss the proposed survey plan(s) prior to data collection efforts for the upcoming calendar year
Agencies To Be Contacted:	BOEM, BSEE, NMFS, CCC, CSLC, CDFW, CGS, DOC
Meeting Location(s):	Virtual (but can be in-person, if requested)
Frequency:	Annually to cover survey activities the following year, but may need to occur more frequently depending on permit timing requirements
Purpose of Engagement:	Interagency post-survey meeting
Agencies To Be Contacted:	BOEM, BSEE, NMFS, CCC, CSLC, CDFW, CGS, DOC
Meeting Location(s):	Virtual (but can be in-person as requested)
Frequency:	Annually to cover the survey activities from the prior year
Purpose of Engagement:	<i>Ad hoc</i> engagements during on-the-water activities
Agencies:	BOEM, BSEE, NMFS, CCC, CSLC, CDFW, CGS, DOC
Meeting Location(s):	By phone
Frequency:	<i>Ad hoc</i> meetings will only be implemented if a contingency plan is initiated per the notification requirements

Appendix B
Construction and Operations Plan (COP) to
Environmental Impact Review

During this stage, RWE will continue to analyze and review information collected during site investigations to develop the Project's COP. The COP will describe how RWE plans to construct and operate a commercial wind project on Lease Area OCS-P 0561. The COP will include a description of all planned facilities (i.e., the Project Design Envelope [PDE]), as well as a description of proposed construction activities, commercial operations, and conceptual decommissioning plans. The COP will summarize results of the biological, geotechnical, socio-economic, and cultural resources studies from the site investigations and baseline studies; and provide an assessment of the Project's potential impacts.

Once the COP is deemed sufficient and complete, BOEM will issue an NOI to prepare an Environmental Impact Statement (EIS), which is the official notice that BOEM (as the lead Agency) will conduct its environmental and technical reviews of the Project. Agencies, Tribes/Tribal Nations, and the public will have the opportunity to participate in a public scoping meeting(s) and provide feedback to BOEM on the issues and impacts to address in the EIS. BOEM (and any cooperating Agencies) will focus the analysis on significant issues and reasonable alternatives. Once the draft EIS has been completed, Agencies, Tribes/Tribal Nations, and the public will have at least 45 days and at least one public hearing to review and provide comments on the document. BOEM will then publish a Final EIS, which begins a 30-day minimum wait period before there is a final decision on the proposed action. At the conclusion of NEPA review, which overall can be expected to take about two years, BOEM will decide whether to approve, approve with modifications, or disapprove the COP. BOEM's decision will be formalized in a Record of Decision (ROD), which completes the NEPA review. The ROD will be followed by publishing the formal COP approval that contains the terms and conditions RWE must abide by when constructing, operating, and decommissioning the Project.

Following the filing of a lease application related to tidal and/or submerged lands, and the beds of navigable waters from the State of California, the CSLC, as lead Agency, will issue a Notice of Preparation (NOP), which will trigger review of the Project's environmental effects under CEQA. This is expected to occur at about the same time that BOEM is preparing its NOI for the NEPA document. Prior to preparation of the Environmental Impact Report (EIR), however, CSLC staff will engage in early consultation regarding the scope and content of the planned environmental review. Interested agencies, Tribes/Tribal Nations, and the public will be able to attend a scoping meeting convened within 30 days of a request submitted to CSLC and at which time, comments and input addressing the proposed environmental document can be submitted. Staff will then select and the CSLC will then enter a contract with an environmental consultant to prepare the EIR, the costs of which will be passed along to the project applicant. This is expected to be a one to two-year process. Once the draft EIR is completed, Agencies, Tribes/Tribal Nation, and the public will have a minimum 45-day review and comment period and a public

meeting will be held. The last step involves holding a public meeting to consider whether to certify the final EIR.

If the involved Federal and State Agencies can agree on the process, the NEPA and CEQA documents can be coordinated and streamlined to the extent feasible.

During the Environmental Impact Review stage, RWE will prepare application packages in support of various additional Agency authorizations and permit approvals, as well as CEQA and NEPA clearance, as detailed above. Throughout this time, RWE will provide regular updates to the Agencies involved and seek feedback and recommendations on the applications through pre-application meetings. The principal engagement goals during this stage include, but are not limited to, the following:

B.1 Actions for COP to Environmental Impact Review

- RWE will provide the lead Agencies with opportunities to review and comment on results of studies conducted in support of the COP, environmental analyses, and technical reports.
- RWE will provide Agencies with regular updates on timelines associated with COP development.
- RWE will provide Agencies ample opportunity to review and comment on the COP and associated plans during regular meetings and through document submittals.
- Agencies will submit information requests and questions to RWE, which RWE will address in a timely manner. Agencies may also communicate their feedback to RWE at any time.
- RWE will coordinate with agencies on data needs for assessing potential effects.
- RWE will encourage agencies preparing NEPA and CEQA documents to work together (and with RWE or other leaseholders, as needed) to streamline the assessments and minimize the number of documents that stakeholders will be asked to review.
- RWE will summarize meetings and other actions in its semi-annual progress reports to BOEM.
- RWE will provide Agencies with an opportunity to review and comment on draft permit application package submittals.
- RWE will seek input from lead Agencies regarding project plans and will consider recommendations from those Agencies in developing final project designs and measures.

- RWE will maintain its website with current Project information including the current version of this ACP.
- RWE will conduct a review of the ACP contact list with the agencies and update it, as needed, prior to when the next stage of the Project begins in Appendix C.

B.2 Individual Distribution List for COP to Environmental Impact Review

This table below is intended to provide the full listing of Agency contacts who will receive information about the COP development and the environmental/technical reports. This will also include the Project’s semi-annual progress reports that describe activities associated with the COP and other report developments as well as engagements conducted.

Table B-1. *Distribution List From COP to Environmental Impact Review*

Name	Agency	Phone	Email
Carlos Gomez	BOEM	(202) 361-3812	juan.gomez@boem.gov
Deana Meier	BOEM	(619) 993-2045	Deana.meier@boem.gov
Bobby Kurtz	BSEE	(805) 384-6359	Bobby.Kurtz@bsee.gov
Nathan Sikula	BSEE	N/A	nathan.sinkula@bsee.gov
Holly Wyer	CCC	(415) 904-5245	holly.wyer@coastal.ca.gov
Heather McNair	CCC	N/A	heather.mcnair@coastal.ca.gov
Becky Ota	CDFW	(650) 631-6789	TBD
Eric Wilkins	CDFW	(805) 594-6172	TBD
Jay Staton	CDFW	(707) 951-2049	TBD
Crystal D'Souza	CDFW	(916) 809-3928	TBD
Rhiannon Mulligan	CDFW	(916) 594-6360	TBD
Jeremy Lancaster	CGS	(916) 204-1710	Jeremy.Lancaster@conservation.ca.gov
David Shabazian	DOC	(916) 322-1080	webmaster@conservation.ca.gov

Table B-2. *Engagement Frequency and Location*

Engagement Summary During the COP to Environmental Impact Review Stage	
Purpose of Engagement:	One-on-one and/or interagency, based on subject matter
Agencies:	BOEM, BSEE, DoD, USEPA, USACE, USFWS, NMFS, NPS, USCG, CCC, CDFW, CGS, DOC
Meeting Location:	Virtual
Frequency:	Milestone-based and/or semi-annual

Appendix C

Construction Activities

During this stage, RWE will construct the proposed offshore wind farm within the Lease Area. Construction activities will be performed within the requirements and conditions of the issued permits. At this time, there is no estimate on the duration of construction. The principal engagement actions to occur during this stage will include, but are not limited to, the following:

C.1 Actions for Construction

- RWE will comply with approved construction mitigation requirements and permit conditions
- RWE will provide regular Project construction updates and the status of various permit conditions.
- RWE will notify the appropriate Agencies about construction vessel movements and construction activities.
- RWE will communicate results from environmental, social, and cultural resources monitoring reports.
- RWE will summarize meetings and other actions in its semi-annual progress reports.
- RWE will maintain its website with current Project information including the current version of this ACP.
- RWE will conduct a review of the ACP contact list with Agencies and update it, as needed, prior to when the next stage of the Project begins in Appendix D.

C.2 Distribution List During Construction

This table below provides the full listing of federal, state, and local agency contacts who will receive information during the Construction phase of the Project. This will also include the Project’s progress reports, which will summarize coordination meetings conducted in the reporting period.

Table C-1. Distribution List During Construction Activities

Name	Agency	Phone	Email
Carlos Gomez	BOEM	(202) 361-3812	juan.gomez@boem.gov
Deana Meier	BOEM	(619) 993-2045	Deana.meier@boem.gov
Bobby Kurtz	BSEE	(805) 384-6359	Bobby.Kurtz@bsee.gov
Nathan Sikula	BSEE	N/A	nathan.sinkula@bsee.gov
Jaclyn Daly	NMFS OPR	(301) 427-8401	jaclyn.daly@noaa.gov
Lilah Isé	NMFS WCR	(562) 505-7304	jennifer.ise@noaa.gov

Name	Agency	Phone	Email
Holly Wyer	CCC	(415) 904-5245	holly.wyer@coastal.ca.gov
Heather McNair	CCC	N/A	heather.mcnair@coastal.ca.gov
Becky Ota	CDFW	(650) 631-6789	TBD
Eric Wilkins	CDFW	(805) 594-6172	TBD
Jay Staton	CDFW	(707) 951-2049	TBD
Crystal D'Souza	CDFW	(916) 809-3928	TBD
Rhiannon Mulligan	CDFW	(916) 594-6360	TBD
Jeremy Lancaster	CGS	(916) 204-1710	Jeremy.Lancaster@conservation.ca.gov
David Shabazian	DOC	(916) 322-1080	webmaster@conservation.ca.gov

Table C-2. Engagement Frequency and Location

Engagement Summary During the Construction Stage	
Purpose of Engagement:	One-on-one and/or interagency, based on topic
Agencies:	BOEM, BSEE, NMFS OPR, NMFS WCR, CCC, CDFW, NMFS, CGS, DOC
Meeting Location(s):	Hybrid
Frequency:	Monthly

Appendix D

Operations and Maintenance Activities

During the Operations and Maintenance (O&M) stage, RWE will operate, and perform routine maintenance on its offshore wind farm within the Lease Area. The initial operations term for the Lease Area is 33 years.

D.1 Actions During O&M

- RWE will comply with approved operational mitigation requirements and permit conditions.
- RWE will communicate regular updates to Agencies on construction, operations, and maintenance activities on the lease site.
- RWE will communicate the findings of ongoing environmental, socio-economic, and cultural resources monitoring reports, as required.
- RWE or its third-party vessel contractors will conduct real-time coordination with agencies and ports/harbor districts on scheduled activities and vessel traffic.
- RWE will summarize meetings and other actions in its semi-annual progress reports.
- RWE will maintain its website with current Project information including the current version of this ACP.
- RWE will conduct a review of the ACP contact list with Agencies and update it, as needed, prior to when the next stage of the Project begins in Appendix D.

D.2 Distribution List During O&M Activities

The table below provides the full listing of Agency contacts who will receive information about this stage of the Project. This will include the Project’s progress reports and coordination meetings that were conducted during the reporting timeframe.

Table D-1. *Distribution List During O&M Activities*

Name	Agency	Phone	Email
Carlos Gomez	BOEM	(202) 361-3812	juan.gomez@boem.gov
Deana Meier	BOEM	(619) 993-2045	Deana.meier@boem.gov
Bobby Kurtz	BSEE	(805) 384-6359	Bobby.Kurtz@bsee.gov
Nathan Sikula	BSEE	N/A	nathan.sinkula@bsee.gov
Jaclyn Daly	NMFS OPR	(301) 427-8401	jaclyn.daly@noaa.gov
Lilah Isé	NMFS WCR	(562) 505-7304	jennifer.ise@noaa.gov
Holly Wyer	CCC	(415) 904-5245	holly.wyer@coastal.ca.gov

Name	Agency	Phone	Email
Heather McNair	CCC	N/A	heather.mcnair@coastal.ca.gov
Becky Ota	CDFW	(650) 631-6789	TBD
Eric Wilkins	CDFW	(805) 594-6172	TBD
Jay Staton	CDFW	(707) 951-2049	TBD
Crystal D'Souza	CDFW	(916) 809-3928	TBD
Rhiannon Mulligan	CDFW	(916) 594-6360	TBD
Jeremy Lancaster	CGS	(916) 204-1710	Jeremy.Lancaster@conservation.ca.gov
David Shabazian	DOC	(916) 322-1080	webmaster@conservation.ca.gov

Table D-2. *Engagement Frequency and Location*

Engagement Summary During O&M	
Purpose of Engagement:	One-on-one and/or interagency, based on topic
Agencies:	BOEM, BSEE, CCC, CDFW, CGS, DOC, NMFS
Meeting Location(s):	Hybrid
Frequency:	Biannual

Appendix E

Decommissioning

At the end of the Project’s life, RWE will submit a decommissioning application and plan to BOEM and other applicable Agencies for review and approval. Once approved, RWE will decommission the Project in accordance with the plan.

E.1 Actions for Decommissioning

- RWE will comply with approved decommissioning mitigation requirements and permit conditions.
- RWE will collaborate with Agencies to develop a decommissioning plan that minimizes environmental, social, and/or cultural impacts to the greatest extent practicable.
- RWE will provide status/progress updates of decommissioning works.
- RWE will coordinate with Agencies on assessing the Project’s potential effects.
- RWE will coordinate with relevant Agencies on scheduled decommissioning activities.
- RWE will summarize meetings and other actions related to decommissioning in its semi-annual progress reports to BOEM.
- RWE will maintain its website with current Project information including the current version of this ACP.

E.2 Distribution List During Decommissioning

This list below is intended to provide updates to Agency contacts who wish to receive information when it is also provided to the agency POCs listed in Section 2.3. This may include progress reports, decommissioning plans, monitoring activities, and other issue-specific information relevant to current coordination and communication efforts associated with decommissioning activities.

Table E-1. *Distribution List During Decommissioning*

Name	Agency	Phone	Email
Carlos Gomez	BOEM	(202) 361-3812	juan.gomez@boem.gov
Deana Meier	BOEM	(619) 993-2045	Deana.meier@boem.gov
Bobby Kurtz	BSEE	(805) 384-6359	Bobby.Kurtz@bsee.gov
Nathan Sikula	BSEE	N/A	nathan.sinkula@bsee.gov
Jaclyn Daly	NMFS OPR	(301) 427-8401	jaclyn.daly@noaa.gov
Lilah Isé	NMFS WCR	(562) 505-7304	jennifer.ise@noaa.gov
Holly Wyer	CCC	(415) 904-5245	holly.wyer@coastal.ca.gov
Heather McNair	CCC	N/A	heather.mcnair@coastal.ca.gov

Name	Agency	Phone	Email
Becky Ota	CDFW	(650) 631-6789	TBD
Eric Wilkins	CDFW	(805) 594-6172	TBD
Jay Staton	CDFW	(707) 951-2049	TBD
Crystal D'Souza	CDFW	(916) 809-3928	TBD
Rhiannon Mulligan	CDFW	(916) 594-6360	TBD
Jeremy Lancaster	CGS	(916) 204-1710	Jeremy.Lancaster@conservation.ca.gov
David Shabazian	DOC	(916) 322-1080	webmaster@conservation.ca.gov

Table E-2. *Engagement Frequency and Location*

Engagement Summary During Decommissioning	
Purpose of Engagement:	One-on-one and/or interagency, based on topic
Agencies:	BOEM, BSEE, CCC, CGS, DOC, NMFS
Meeting Location(s):	Hybrid
Frequency of Engagements During Decommissioning:	Monthly