



Canopy Offshore Wind Project

RWE Progress Report

Document Date: March 4, 2024

Document Number: 004998795-02

Revision Number: 2.0

Classification: Public

Reporting Period: June 1–October 31, 2023



Company	RWE Offshore Wind Holdings, LLC
Project	Canopy Offshore Wind Project, California
Package	N/A
Asset	Lease No. OCS-P 0561 (Lessee Company No. 15061)
<hr/>	
Document Title	RWE Progress Report
Ecodoc Number	004998795-02
Revision Number	02

This document and any information therein are confidential property of RWE Renewables and without infringement, neither the whole nor any extract may be disclosed, loaned, copied or used for manufacturing, provision of services or other purposes whatsoever without prior written consent of RWE Renewables, and no liability is accepted for loss or damage from any cause whatsoever from the use of the document. RWE Renewables retains the right to alter the document at any time unless a written statement to the contrary has been appended.

Date	Version No.	Description of Changes
12/1/23	1.0	Original submission to BOEM
3/4/24	2.0	Updated the cover page, added a footnote related to the naming of the Canopy Offshore Wind project, added a new weblink for the Joint Fisheries Communications Plan, and made the document 508 compliant

Executive Summary

Offshore wind will play a pivotal role in California's transition to a clean energy economy. It is an important renewable resource that both the State and Federal governments are relying on to meet future net carbon goals.

RWE is one of the world's leading renewable energy companies that is driving the expansion of green energy in more than 20 countries on five continents. RWE has a goal of creating 65 gigawatts (GW) of clean energy by 2030. The United States (U.S.) is a key market for RWE's renewable energy deployment goals and has a current capacity of approximately 11 GW, which includes onshore and offshore wind farms, onshore solar, battery storage facilities, hydropower, and biomass. RWE is ranked second in the world in offshore wind with 19 offshore wind projects in operation. It is becoming the fastest-growing offshore wind company in the U.S. after recent acquisitions of approximately 5 GW of seabed capacity in the Pacific and Atlantic oceans, and the Gulf of Mexico.

In December 2022, RWE Offshore Wind Holdings, LLC successfully secured the lease rights to an area off the coast of Humboldt County as part of the California offshore wind lease auction. Designated as Outer Continental Shelf-Pacific (OCS-P) 0561, the Commercial Lease of Submerged Lands for Renewable Energy Development on the Outer Continental Shelf (Lease), executed by the Bureau of Ocean Energy Management (BOEM) and RWE, became effective on June 1, 2023. Since then – and beginning prior to the Lease execution date – RWE has been actively engaging with Tribes/Tribal Nations, commercial and recreational fisheries, federal and state agencies, and other stakeholders to introduce the Project and the Project team. RWE has also been developing communications plans to ensure active communication and engagement efforts with commercial and recreational fisheries, Tribes/Tribal Nations, and federal, state, and local agencies (including harbor districts) to create opportunities for their participation throughout the Project¹ development process.

The Lease requires that RWE submit biannual Progress Reports to inform the agency and others on the Project's activities during the reporting period. This is the first Progress Report since the Lease was executed on June 1, 2023. This Progress Report covers activities through October 31, 2023, including outreach and engagement activities that occurred prior to Lease execution.

¹ As of January 9, 2024, "the Project" refers to RWE's Canopy Offshore Wind project.

Progress Report Section 1 provides a description of the background of the Project and the overall purpose of progress reporting. Section 2 describes RWE's engagement activities conducted with Tribes/Tribal Nations that may be impacted by the Project. A summary of engagements with commercial and recreational fishing communities and fishery regulators is provided in Section 3. Section 4 describes agency engagements and Section 5 includes other types of stakeholders that have not already been described elsewhere. Section 6 summarizes outreach efforts that RWE has conducted to inform others about upcoming activities related to site characterization and investigations to support data and information needs for the Project. Section 7 describes transmission planning efforts and outreach initiatives related to the Project's needs for connecting to the onshore electric grid.

Additional information on the Project, as well as where interested parties can sign up to receive RWE's monthly newsletters, will be posted on the Project's website.

Table of Contents

1.0	Background and Purpose	1
1.1.	Background of RWE’s California Offshore Wind Project.....	1
1.2.	Purpose of the Biannual Progress Reports.....	1
2.0	Tribes/Tribal Nations.....	4
2.1.	Summary of Engagements with Tribes/Tribal Nations	4
2.2.	Potential Project Effects Related to Tribes/Tribal Nations’ Interests.....	7
2.3.	Upcoming Engagements with Tribes/Tribal Nations	8
3.0	Commerical and Recreational Fisheries.....	9
3.1.	Summary of Engagements with Fisheries	9
3.2.	Potential Project Effects Raised by Commercial and Recreational Fisheries	14
3.3.	Upcoming Engagement Activities With Commercial and Recreational Fisheries	15
4.0	Federal, State, and Local Agencies.....	16
4.1.	Summary of Engagements with the Agencies	16
4.2.	Potential Project Effects Raised by the Agencies	21
4.3.	Upcoming Engagement Activities with the Agencies	22
5.0	Other Stakeholders.....	23
5.1.	Summary of Engagement Activities with Other Stakeholders.....	23
5.2.	Potential Project Effects Related to Other Stakeholders	25
5.3.	Upcoming Engagement Activities With Other Stakeholders	26
6.0	Survey Planning.....	27
6.1.	Summary of Engagement Activities Related to Survey Planning	27
6.2.	Potential Project Effects Related to Survey Planning	27
6.3.	Upcoming Engagement Activities Related to Survey Planning.....	28
7.0	Transmission Planning	29
7.1.	Summary of Engagements Related to Transmission Planning.....	29
7.2.	Potential Project Effects Related to Transmission Planning	30
7.3.	Upcoming Engagement Activities Related to Transmission Planning.....	30

Table of Tables

Table 1. Tribal Engagements During the Reporting Period	6
Table 2. Fishery Engagements During the Reporting Period	13
Table 3. Agency Engagements During the Reporting Period	19
Table 4. Other Stakeholder Engagements During the Reporting Period	24

Table of Figures

Figure 1 Lease Area OCS-P 0561	3
--------------------------------------	---

Table of Appendices

Appendix A	Project Team Contact Information
Appendix B	Relevant fisheries constituents

Glossary of Terms

Term	Definition
ACP	Agency Communications Plan
AEDC	Arcata Economic Development Corporation
AUV	autonomous underwater vehicle
BOEM	Bureau of Ocean Energy Management
CA-OPR	California – Office of Planning and Research
CAISO	California Independent System Operator
CCC	California Coastal Commission
CDFW	California Department of Fish and Wildlife
CEO	Chief Executive Officer
CGS	California Geological Survey
CNRA	California Natural Resources Agency
COP	Construction and Operations Plan
CORE Hub	Redwood Region Climate and Community Resilience (CORE) Hub
CPH	California Polytechnic State University, Humboldt
CSLC	California State Lands Commission
DOI	(U.S.) Department of the Interior
DTSC	(California) Department of Toxic Substances Control
EPIC	Environmental Protection Information Center
ESA	Endangered Species Act
FCP	Fisheries Communications Plan
ft	feet
GW	gigawatt
IHA	Incidental Harassment Authorization
Lease	Commercial Lease of Submerged Lands for Renewable Energy Development on the Outer Continental Shelf, OCS-P 0561
km	kilometers
m	meters
mi	miles
MMIP	Missing and Murdered Indigenous Peoples
MMPA	Marine Mammal Protection Act
MWM	Marine Wildlife Monitor
NAHC	(California) Native American Heritage Commission
NATCP	Native American Tribal Communications Plan
NCUAQMD	North Coast Unified Air Quality Management District
NGO	non-governmental organization
nm	nautical miles
NOAA	National Oceanic and Atmospheric Administration
NMFS	(NOAA) National Marine Fisheries Service
NPS	National Park Service
NREL	National Renewable Energy Laboratory

Term	Definition
NWFSC	Northwest Fisheries Science Center
OCS	Outer Continental Shelf
ODFW	Oregon Department of Fish & Wildlife
OFL	onboard fisheries liaisons
OPR	(NOAA) Office of Protected Resources
PFMC	Pacific Fishery Management Council
PNNL	Pacific Northwest National Laboratories
POC	Point of Contact
POI	Point of Interconnection
PSO	Protected Species Observer
Q	quarter
RWCD	Regional Water Control District
RWE	RWE Offshore Wind Holdings, LLC
SAP	Site Assessment Plan
SWFSC	Southwest Fisheries Science Center
TPP	Transmission Planning Process
TWG	Turbine Wind Generator
U.S.	United States
USCG	U.S. Coast Guard
USDOI	U.S. Department of the Interior
USEPA	U.S. Environmental Protection Agency
USFWS	U.S. Fish and Wildlife Service
WCR	(NMFS) West Coast Region

1.0 Background and Purpose

1.1. Background of RWE's California Offshore Wind Project

In December 2022, RWE Offshore Wind Holdings, LLC (hereafter RWE) was selected as the provisional winner of a bid submitted to the U.S. Department of the Interior (USDOI) Bureau of Ocean Energy Management (BOEM) for a Commercial Lease of Submerged Lands for Renewable Energy Development on the Outer Continental Shelf (Lease). The Lease is designated as Outer Continental Shelf-Pacific 0561 (OCS-P 0561) and became effective on June 1, 2023.²

RWE's California Offshore Wind Project (or Project) is shown in Figure 1. The Lease Area encompasses 63,338 acres of seabed in water depths ranging from 1,762 to 3,337 feet (ft; 537 to 1,017 meters [m]) approximately 20 to 33 miles (mi; 32 to 53 kilometers [km] or 17 to 29 nautical miles [nm]) offshore Humboldt County, California. Fully developed, the renewable energy capacity of the Lease Area is estimated to be 1.6 gigawatts (GW), which could theoretically power more than 600,000 homes annually.

Additional information about RWE's California Offshore Wind Project, including a copy of this and future Progress Reports, will be made publicly available on the Project's website.

1.2. Purpose of the Biannual Progress Reports

In accordance with Lease Addendum "C", 3.1, RWE must submit a Progress Report to BOEM every six months during the site assessment term and the operations term, if a Construction and Operations Plan (COP) is approved. The COP is the application that RWE will submit to BOEM as the first step in the process to receive the permit and approvals needed to construct and operate the Project.

This is the first Progress Report since the Lease became effective on June 1, 2023. The report covers activities from the effective date of the Lease to October 31, 2023. In some instances, RWE conducted early outreach and engagement efforts prior to June 1, 2023; those efforts are also reflected in this report.

The purpose of the Progress Reports is to document RWE's overall progress and engagement activities for the Project that have been undertaken during the reporting period with Tribes/ Tribal Nations and other parties, which include (as applicable)

² The Lease is available at: https://www.boem.gov/sites/default/files/documents/renewable-energy/state-activities/2023-05-16_BOEM_RWE_POCSR_Lease-0561.pdf.

federal, state, and local agencies (including harbor districts); commercial and recreational fishing industries and stakeholders; educational and research institutions; environmental and public interest non-governmental organizations (NGOs); mariners, the maritime industry, and other ocean users; submarine cable operators; coastal communities; and underserved communities, as defined in Section 2 of Executive Order 13985 (*Advancing Racial Equity and Support for Underserved Communities Through the Federal Government*) issued January 2021.

The Progress Reports are organized as follows: Section 2 (Tribes/Tribal Nations); Section 3 (Commercial and Recreational Fisheries); Section 4 (Federal, State, and Local Agencies); Section 5 (Other Stakeholders); Section 6 (Survey Planning); and Section 7 (Transmission Planning). Appendix A is a listing of the Project team.

Progress Reports will include collaborations that RWE has participated in with the offshore wind industry, in general, that are pertinent to California, as well as collaborations with other California offshore wind leaseholders.

Progress Reports will also describe RWE's plans for continued engagements and Project activities that are being contemplated during the next reporting period. Deadlines for submitting the draft Progress Reports to BOEM are December 1 and June 1. Within 60 calendar days from receipt of the report, BOEM may request that RWE modifies the Progress Report to address comments on the contents of the document. As noted, these reports will then be publicly posted to the Project's website.³

³ A link to the Project's website will be included here when it is available.

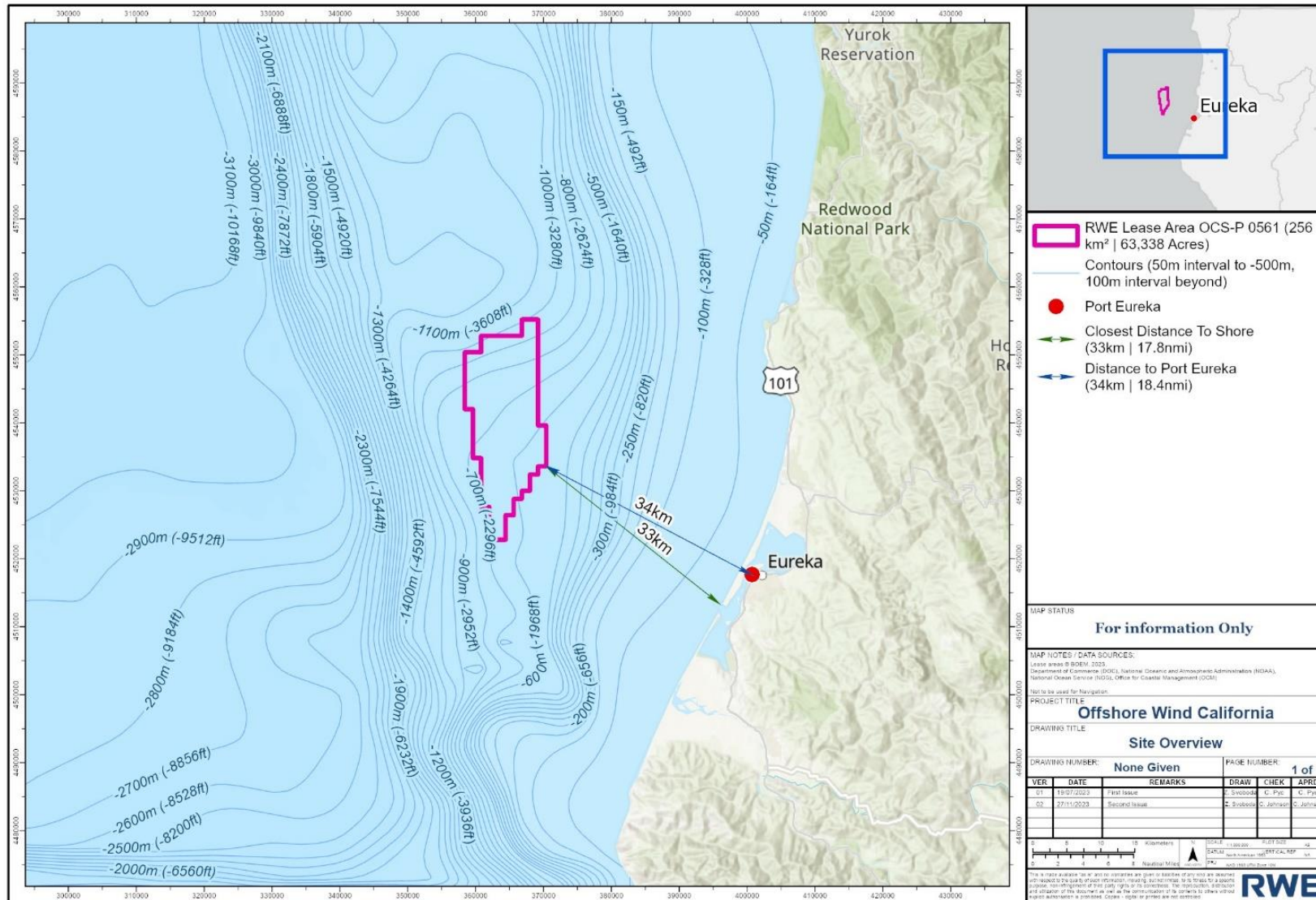


Figure 1 Lease Area OCS-P 0561

2.0 Tribes/Tribal Nations

RWE is committed to early, frequent, and meaningful engagement with Tribes/Tribal Nations, including in ways that are unrelated to Lease or permitting requirements, as preferred and agreed upon by the Tribes/Tribal Nations. RWE recognizes that Tribal values, cultures, and processes are unique for each Tribe. Tribal engagements offer an opportunity for RWE to learn about these unique differences and to approach discussions in culturally appropriate and respectful ways to build lasting relationships and inform Project development. RWE believes that these working relationships will strengthen as trust and mutual understanding is built between RWE and Tribes/Tribal Nations.

RWE will also work with Tribes/Tribal Nations to determine the most appropriate means of formal engagement to solicit feedback related to Tribal fisheries concerns and to answer any questions Tribal members have related to potential interactions between the Project and Tribal fisheries, which may overlap with engagements described in Section 3 (Commercial and Recreational Fisheries). A summary of engagement activities held with potentially affected Tribes/Tribal Nations is provided in Section 2.1. and anticipated engagements during the next reporting period are provided in Section 2.3.

2.1. Summary of Engagements with Tribes/Tribal Nations

Twenty-one Tribes/Tribal Nations were identified by BOEM or the State of California Native American Heritage Commission (NAHC) as having the potential for historical, cultural, or geographical ties to the Project area. One additional Tribe was added to the list by RWE in consultation with its local tribal consultant for a total of twenty-two Tribes/Tribal Nations. Additional Tribes/Tribal Nations may be added to this list at any time.

To initiate engagement with Tribes/Tribal Nations, RWE sent an Introductory Letter signed by the Chief Executive Officer (CEO) of RWE to 11 Tribes in the North Coast Region. This letter was sent shortly after the Lease was awarded in December 2022 and included a request for in-person introductory meetings.

Following the letters, RWE conducted introductory meetings with six Tribes in March 2023, and an additional six meetings were held in June 2023 to discuss survey planning and introduce new Project team members (see Table 1). RWE also met with the Northern California Tribal Chairs Association in March 2023. After these meetings, additional information was provided to the Tribes/Tribal Nations concerning proposed offshore data collection initiatives and RWE's procurement

process to inform potential future participation by Tribal Nations in requests for proposals from RWE.

Throughout the summer months, RWE attended in-person meetings and events to continue introductions and relationship building. These exchanges included discussions about the proposed preliminary offshore activities and opportunities for Tribal involvement, Tribal fisheries, employment opportunities, engagement activities, upcoming activities proposed in RWE's offshore surveys and data collection efforts, and local needs.

To help build knowledge of floating offshore wind, RWE invited representatives of Tribes/Tribal Nations to tour RWE's floating demonstrator, TetraSpar, in Stavanger, Norway. TetraSpar is a fully commissioned floating demonstration project that is producing power and providing data that will be used to inform other commercial-scale floating wind projects. In September 2023, representatives of five Tribes/Tribal Nations traveled to Norway with RWE team members to tour TetraSpar, hear presentations from RWE subject matter experts, interact with participants from other floating offshore wind markets around the world, and tour the local community and areas that supported the demonstration project (e.g. the port and surrounding area).

The initial version of the Native American Tribes Communications Plan (NATCP) was shared with 22 Tribes/Tribal Nations for review and feedback. RWE specified that the NATCP is a "living document" that will be updated as necessary throughout the development process. The NATCP was shared in two batches, the first batch in October 2023 to 11 Tribes/Tribal Nations with whom RWE had previously established contact, and a second batch more recently in November 2023 to additional Tribes/Tribal Nations following an introductory letter, including an offer to meet in person. Tribes/Tribal Nations received introductory letters at different times based on RWE's initial understanding of potentially affected Tribes, and subsequent adjustments in our understanding of which Tribes/Tribal Nations should be engaged.

Throughout the life of the Project, RWE will continue to engage with Tribes/Tribal Nations to share information and provide opportunity for feedback. Comments and feedback from Tribes/Tribal Nations will be accepted at any time. We will also work to adapt our engagement methods and frequency to meet the needs of each Tribe/Tribal Nation. A summary of these engagement activities is provided in Table 1.

Table 1. Tribal Engagements During the Reporting Period

Focus of Discussion or Engagement	Tribe(s)	Summary of Engagement Activities and Discussion Topics	Follow-up Actions, Activities, Outcomes
Introductory letter (January 2023)	Bear River Band of the Rohnerville Rancheria, Big Lagoon Rancheria, Blue Lake Rancheria, Elk Valley Rancheria, Hoopa Valley Tribe, Karuk Tribe, Resighini Rancheria, Tolowa Dee-ni' Nation, Trinidad Rancheria, Wiyot Tribe, Yurok Tribe, Quartz Valley Indian Community	Introduced the Project to Tribal Nations from RWE's CEO	In-person introductory meetings scheduled for March after letter receipt
In person meetings (March 2023)	Northern California Tribal Chairs Association	Provided an opportunity to introduce RWE, present the Project, and receive questions or feedback	None noted
In person meetings (March 2023)	Hoopa Valley Tribe, Tolowa Dee-ni' Nation, Yurok Tribe, Elk Valley Rancheria, Resighini Rancheria, Blue Lake Rancheria	Provided an opportunity to introduce RWE, present the Project and receive questions or feedback	None noted
In person meeting (May 2023)	Yurok Tribe	Introductory meeting with CEO and the Yurok Tribe at the Pacific Offshore Wind Summit in Sacramento, California	Follow-ups on additional engagements and information sharing
In person meetings (June 2023)	Blue Lake Rancheria, Trinidad Rancheria, Yurok Tribe, Wiyot Tribe, Hoopa Valley Tribe, Resighini Rancheria	Discussed local hiring and engagements activities, and future survey and data collection activities	Follow-ups on additional engagements and information sharing
In person meeting (July 2023)	Trinidad Rancheria	RWE tour of Trinidad Rancheria Pier and discussion of Tribal fisheries	Follow-ups on additional engagements and information sharing
Presentation to the Tribal Marine Collaborative (August 2024)	Bear River Band of the Rohnerville Rancheria	RWE introductory presentation	Follow-ups on additional engagements and information sharing
In person meetings (August 2024)	Wiyot Tribe, Trinidad Rancheria	Discussed RWE's engagement activities and local needs	Follow-ups on additional engagements and information sharing
Yurok Salmon Festival event (August 2023)	Yurok Tribe	RWE attended the Yurok Salmon Festival	This was an opportunity for some of the Project team to meet the community; no Project issues were addressed

Focus of Discussion or Engagement	Tribe(s)	Summary of Engagement Activities and Discussion Topics	Follow-up Actions, Activities, Outcomes
RWE TetraSpar Floating Demonstrator Tour in Stavanger Norway (September 2023)	Yurok Tribe, Trinidad Rancheria, Hoopa Valley Tribe, Resighini Rancheria, Blue Lake Rancheria	Presentations from RWE subject matter experts and a tour of RWE’s floating demonstrator project	Follow-ups on additional engagements and information sharing
RWE Project Team visit to the Yurok Reservation (October 2023)	Yurok Tribe	Yurok Tribe presentation to the Project team on Native American history in California and the relationship between California Native Americans and Federal/State governments; introductory comments were also made by Yurok Tribal Council members to RWE staff	Follow-ups on additional engagements and information sharing
Draft Native American Tribes Communications Plan (NATCP; October 2023)	Yurok Tribe, Wiyot Tribe, Trinidad Rancheria, Resighini Rancheria, Hoopa Valley Tribe, Blue Lake Rancheria, Tolowa Dee-ni’ Nation, Elk Valley Rancheria, Bear River Band of the Rohnerville Rancheria, Big Lagoon Rancheria, Karuk Tribe	Draft NATCP provided to Tribes with a request for engagement and comments/feedback	Follow-ups to schedule engagement meetings regarding the NATCP
Introductory letter (October 2023)	Hoh Tribe, Makah Tribe, Nor-Rel-Muk Wintu Nation, Quileute Tribe, Quinalt Indian Nation, Shasta Indian Nation, Shasta Nation Tribe, Round Valley Indian Tribe, Tsnungwe Council	Introductory letter from RWE CEO to additional Tribes identified by BOEM and NAHC	Follow-ups on introductory meetings

2.2. Potential Project Effects Related to Tribes/Tribal Nations’ Interests

Tribes/Tribal Nations have expressed a desire for early and frequent communication to discuss Project plans, potential impacts and concerns, and opportunities for collaboration with Tribal communities and Tribal businesses. General concerns expressed by Tribes/Tribal Nations have included:

- Viewshed disruption;
- Project specific and cumulative impacts to the maritime environment;
- Impacts to commercial fisheries;
- Port development;

- Impacts from workforce development and increased risk in a region with high rates of missing and murdered Indigenous Peoples (MMIP).

Tribes/Tribal Nations have also expressed capacity concerns relating to their ability to engage with the wind energy industry. RWE is evaluating ways to support Tribal capacity and to increase information sharing and engagement through the life of the Project. RWE will also adapt its engagement activities to meet the Tribes/Tribal Nations' needs and preferences and develop a Project that avoids, minimizes, and/or mitigates impacts to environmental, social, and cultural resources. RWE endeavors to avoid or minimize conflicts through appropriate communication, coordination, and collaboration efforts.

2.3. Upcoming Engagements with Tribes/Tribal Nations

During the next reporting period, RWE anticipates the following engagements with Tribes and Tribal Nations:

- Introductory meetings with RWE's newly hired Tribal Relations Manager
- Continue NATCP engagements and receive comment/feedback on the plan
- Conduct additional engagements to provide updates on proposed survey activities
- Engage with Tribal Nations on a Marine Wildlife Monitor (MWM)/Protected Species Observer (PSO) request for proposals and subsequent training
- Hold a Tribal "Pre-Survey Meeting" in accordance with Lease Addendum "C", 5.3.3, which requires the meeting be held at least 30 days prior to start of survey activities (refer to Section 6 for more information about the Survey Plan)

3.0 Commercial and Recreational Fisheries

RWE, from experience to date in California and experience on other projects, recognizes that coordination and engagement with all potentially affected parties is crucial. As noted, RWE is committed to continuing an “early and often” approach to understand potentially affected parties’ concerns so that the Project is developed in an environmentally, socially, and culturally sustainable manner.

Prior to the effective date of the Lease, RWE began to identify and engage with various commercial and recreational fishery constituents that were and continue to be identified as potentially interested in or affected by the Project. RWE has been in communication with these potentially affected parties to introduce the Project and the Project team, provide an overview of the Project (as well as offshore wind in general), and solicit feedback.

A summary of engagement activities for the reporting period (and earlier), with Commercial and Recreational Fisheries, is provided below. A listing of relevant fisheries constituents that have been or will be engaged is provided in Appendix B.

3.1. Summary of Engagements with Fisheries

RWE has conducted extensive engagement with commercial and recreational fishery constituents to inform initial Project planning and develop a foundation for creating productive and collaborative relationships with the fishing community. The Project team takes a broad and inclusive approach to fisheries engagement, actively communicating with commercial and recreational fishermen, industry associations and trade groups, shoreside businesses, harbor districts, state and federal fisheries agencies, and academic and research institutions. Engagement strategies have included one-on-one conversations; small and large group meetings; and presentations and participation at formal meetings, hearings, and briefings. Engagements have included in-person, hybrid, and virtual formats (e.g., video, webinar, phone).

RWE has been actively engaging with West Coast fishery constituents since April 2022. Between April and when the lease auction occurred in December 2022, RWE had 14 direct engagements with over 66 fishery constituents, including fishermen, fishing associations, managers, and interested parties. These engagements provided RWE with a general understanding of local and regional fisheries, industry associations, and management bodies; the history of industry-to-industry agreements between fisheries and other offshore industries (e.g., telecommunications, oil and gas); and fishery concerns related to offshore wind development.

Following the auction and provisional award of the Lease, RWE quickly expanded engagement efforts to support communications and Project planning activities. Between January 1, 2023 and October 31, 2023, RWE had 42 direct substantive engagements with over 330 fishery participants and constituents. This does not include several hundred informal and electronic communications (e.g., emails, phone calls, texts) that supported ongoing dialogue, relationship building, and information sharing. RWE's fisheries engagements were diverse, covering a range of fisheries, geographies, and constituent groups. A few key engagements during this reporting period include:

- Pacific Fishery Management Council (PFMC or Council): On June 6, 2023, RWE provided a presentation and participated in an introductory meeting with PFMC's Marine Planning Committee. Topics included communication strategies and preferences, and general comments and concerns relating to offshore wind development. Members of the Project team have maintained active dialogue with PFMC staff and Marine Planning Committee members and have attended various PFMC meetings to maintain awareness of issues that are important to the Council and their fishery constituents.
- Commercial and Recreational Fishing Associations and Coastwide Engagements: RWE met with leadership and members from ten commercial and recreational fishing associations representing local, regional, and coastwide constituents. RWE also initiated dialogue with fishery managers in Oregon to begin identifying and engaging with interested fishery constituents in Oregon.
- Joint Committee on Fisheries and Aquaculture: RWE provided a presentation, answered questions, and participated in discussions during an Offshore Wind Hearing conducted by the California State Legislature's Joint Committee on Fisheries and Aquaculture on May 18, 2023. The hearing was intended to bring all sides of the issue together with representatives from federal and state agencies, tribal leaders, offshore wind industry representatives, representatives from the fishing fleet, labor leaders, and environmental organizations.
- RWE also met with federal and state agencies associated with offshore fishery survey and research activities, as well as presentations to agency staff on offshore wind permitting and science needs (refer to Section 4).

A high-level summary of RWE's commercial and recreational fisheries engagement activities is provided in Table 2, below. Please note that most engagement activities cover multiple topics and have potential relevance to multiple Project phases.

Engagements conducted in this reporting period resulted in several important outcomes, including:

- The development of a draft Joint Fisheries Communications Plan (FCP) with neighboring leaseholder Vineyard Offshore, and the identification of additional opportunities for coordination between the two developers;
- A detailed understanding of seasonality and operations for commercial and recreational fisheries operating within and shoreward of the Lease Area to inform site assessment survey planning, fisheries coordination, and the Project development process;
- A shared understanding of fishery and navigational concerns and the importance of coordination and communication to avoid and minimize impacts to fisheries;
- Positive steps toward the development of productive, respectful working relationships with fishery constituents;
- An initial list of key contacts and fishery constituents who wish to stay informed of Project activities; and
- The identification of additional and ongoing opportunities for fisheries engagement.
- Since January 2023, RWE has also taken steps to build its capacity for engaging with commercial and recreational fisheries. The Project team enlisted the services of a fisheries consultant in March 2023 and has been actively recruiting for a Project Fisheries Liaison (refer to Appendix A for a current list of the Project team). Additionally, the Project team has initiated conversations with the fishing community to articulate roles and responsibilities for the Independent Fisheries Liaison (as required in Lease Addendum “C”, 6.2) and to develop a model for industry representation that best facilitates engagement by the full range of fishery constituents. RWE recognizes the need to ensure effective engagement and representation while also balancing the time and resources required for fishery participants and fishing communities to engage with multiple long-term projects. Exploring efficient mechanisms for communication and inclusive representation remain a priority for the Project team.

RWE has taken a leading role in coordinating fishery engagement efforts with other California leaseholders. For example, RWE organized an introductory meeting among four developers (RWE, Vineyard Offshore, Invenenergy, and Equinor) and PFMC’s Marine Planning Committee on June 6, 2023. Understanding the stakeholder burden created by multiple meetings, RWE has been collaborating with Vineyard Offshore since early June 2023 to host joint meetings with fishery constituents. RWE was also instrumental in developing a joint FCP with Vineyard

Offshore. The joint FCP approach was adopted in direct response to feedback from the fishing industry to streamline and simplify communication and coordination efforts across the two northern California lease areas. While RWE had completed a draft of its FCP, the company invested additional time and resources to transform the draft into a shared FCP with Vineyard Offshore. As part of this process, RWE and Vineyard Offshore are discussing the potential of a single gear loss claims procedure that could apply to both lease areas, as well as exploring the potential for enlisting a single Independent Fisheries Liaison to further streamline communication and engagement with the fishing community. RWE also continues to be an active member of the industry trade association's California fisheries working group.

A substantial amount of engagement with commercial and recreational fisheries was undertaken during this reporting period to inform the development of a thoughtful and detailed draft FCP. RWE and Vineyard Offshore distributed the draft Joint FCP to over 65 fishery contacts on October 2, 2023, and requested their assistance in sharing the draft FCP as broadly as possible. These contacts included over a dozen associations who together represent thousands of fishery constituents along the West Coast. On October 10, 2023, RWE and Vineyard Offshore hosted a hybrid meeting in Eureka, CA to solicit input on the draft plan. The 39 fishery constituents who attended the meeting provided valuable feedback on the FCP and raised several topics for future discussion. During this reporting period, RWE and Vineyard Offshore also distributed a video of the FCP meeting presentation to their contacts and to those who participated in a meeting with PFMC's Marine Planning Committee to gather input on the draft FCP. RWE and Vineyard Offshore will be updating the FCP in November 2023 in response to the feedback received (refer to Section 3.3)⁴.

⁴<https://americas.rwe.com/-/media/RWE/RWE-USA/documents/rwe-vineyard-offshore-joint-fcp.pdf>

Table 2. Fishery Engagements During the Reporting Period

Focus of Discussion or Engagement	Party(ies) (Number of Engagements)	Summary of Engagement Activities and Discussion Topics	Follow-up Actions, Activities, Outcomes
Introduction to Project and Project team; communication strategies and priority issues for commercial fishing community; characterization of fisheries	Commercial (20); includes commercial fishermen, seafood processors, shoreside businesses and infrastructure, fishing associations and trade groups	<ul style="list-style-type: none"> • Communication and engagement strategies, tools and preferences. • Seasonality, distribution and operational details for commercial fisheries. • Concerns about potential impacts to commercial fishing businesses, fish stocks and ecosystems. • The need to develop robust industry-to-industry agreements. 	<ul style="list-style-type: none"> • Developed a joint FCP that reflects fishery input. • Considered detailed fishery information to inform Project planning. • Discussed models for fisheries representation and coordination. • Planned participation in the California Coastal Commission (CCC) Section 7c Fisheries Working Group.3F5
Introduction to Project and Project team; communication strategies and priority issues for recreational fishing community; characterization of fisheries	Recreational (6); includes recreational fishermen, charter/for-hire captains, recreational fishing association	<ul style="list-style-type: none"> • Communication and engagement strategies, tools and preferences. • Operations, seasonality and distribution of private and charter recreational fisheries. • Concerns regarding potential impacts to recreational and charter fishing, including access, transit and safety. 	<ul style="list-style-type: none"> • Incorporated input into draft FCP. • Considered detailed fishery information to inform Project planning. • Identified additional opportunities for engaging recreational fishermen
Introduction to Project and Project team; communication strategies; identification of fishery constituents; priority issues for the PFMC community	Regional Fishery Management Council (5)	<ul style="list-style-type: none"> • Pathways for engaging with PFMC and fishery constituents through the Council process. • The importance of West Coast fisheries dynamics and engaging fishermen and processors beyond the Humboldt area • Concerns regarding the potential impacts to Tribal fisheries • Concerns regarding cumulative, and ecosystem impacts 	<ul style="list-style-type: none"> • Developed a joint FCP that reflects PFMC input. • Coordinated with PFMC staff on FCP review. • Continue regular engagement with PFMC to identify additional constituents and explore how PFMC could serve as a conduit for communications.

⁵https://documents.coastal.ca.gov/assets/upcoming-projects/offshore-wind/OSW-Fisheries_Cover-Memo.pdf

Focus of Discussion or Engagement	Party(ies) (Number of Engagements)	Summary of Engagement Activities and Discussion Topics	Follow-up Actions, Activities, Outcomes
Introduction to Project and Project team; communication strategies; monitoring and research activities	Academic or Research Institutions and Programs (4)	<ul style="list-style-type: none"> • Research and monitoring activities currently occurring off the Humboldt Coast. • Research interests, expertise and capacity of academic institutions • Opportunities for structuring a coordinated approach to offshore wind monitoring. 	<ul style="list-style-type: none"> • Incorporated feedback into draft FCP. • Planned engagement with academic institutions and participation in ongoing efforts, including the Offshore Wind Monitoring Guidance Working Group.
Introduction to Project and Project team; communication and engagement strategies; various fishery, transit, and coordination considerations	Other (4)	<ul style="list-style-type: none"> • Transit considerations in and out of Humboldt Bay, including existing tow boat and shipping lanes, dredging, and channel capacity. • History of coordination and communication between fisheries and other offshore industries along the West Coast. 	<ul style="list-style-type: none"> • Incorporated feedback into draft FCP. • Consideration of input in survey planning and project design discussions. • Planned future meetings to gather additional information on transit lanes and patterns.

3.2. Potential Project Effects Raised by Commercial and Recreational Fisheries

RWE has identified several categories of potential Project effects and concerns raised by fisheries participants and fishing communities during the reporting period:

- **Ecological:** Potential effects on the productivity, distribution, and migratory patterns of fish species (e.g., changes to upwelling, electromagnetic fields), effects of survey activity and Project operations on habitat and marine wildlife including marine mammals and fishery interactions with protected species, impacts to fishery resource surveys, and the cumulative impacts of planned and future offshore wind development to the Humboldt Coast and the California Current Ecosystem.
- **Safety:** Potential effects of turbines on navigation and marine radar, operation of mobile gear within the Lease Area and export cable corridors, and concerns regarding potential impacts to vessels during ingress and egress from the harbor as well as increased vessel activity within Humboldt Bay and through the channel associated with future construction activity.

- Access: Potential restrictions on the ability for recreational and commercial vessels to fish within the Lease Area during and after construction, potential effects on transit patterns through the Lease Area, and the financial implications of access restrictions, gear interactions, and transit delays.

Fishery constituents have also emphasized the importance of coordination as a means of avoiding and minimizing impacts to fisheries throughout the Project life cycle and communicating early and often, further reinforcing the importance of our joint Fisheries Communications Plan. The Project team continues to integrate fishery input and considerations into the overall Project development process and is actively working to incorporate concerns related to the marine environment, safety, and access into the Project planning process across the Project's workstreams.

3.3. Upcoming Engagement Activities With Commercial and Recreational Fisheries

During the next reporting period, RWE anticipates the following engagement activities with Commercial and Recreational Fishery participants and fishing communities:

- Update the draft Joint FCP based on input received from the fishing community and submit to BOEM for their review and comment. Any additional changes will be made, resubmitted to BOEM, and then sent to the fishing community as well as posted to the Project's website.
- Provide communication materials, including fishery notices and other materials prepared for fishery constituents and other marine users, to the Project website.
- Continue outreach and engagement activities to achieve broad awareness and develop a more complete list of key contacts and West Coast fishery constituents who wish to stay informed of Project activities.
- Continue outreach and coordination with fishery constituents regarding upcoming survey activities, including the development of specific communication materials and coordination protocols for planned survey activity scheduled to begin in 2024.
- Participate in the forthcoming CCC Section 7c Fisheries Working Group and continue dialogue with fishery constituents to explore approaches for avoiding, minimizing, and mitigating potential fishery impacts.
- Continue to build capacity for commercial and recreational fisheries engagement, including hiring a full time RWE Fisheries Liaison, engaging with the fishing community to optimize a model for fisheries representation, and exploring a joint Independent Fisheries Liaison with Vineyard Offshore.

- Continue to collaborate with Vineyard Offshore and other California developers to coordinate and streamline communication and engagement with fishery constituents.
- Continue working with state and federal agencies and academic and research institutions to discuss coordination approaches for research and survey activities off the Humboldt Coast and engage in dialogue around offshore wind science and monitoring needs.
- Engage in internal and external conversations about how best to structure effective and inclusive engagement with tribal fisheries.

4.0 Federal, State, and Local Agencies

At every stage of the Project's development, RWE is committed to providing proactive engagements with regulatory and consulting agencies, and to providing opportunities to give feedback, address concerns, seek clarifications, and offer insights and opinions on industry-related matters. Lease Addendum "C", 3 details the requirements for such engagements and communications. One requirement is to develop an Agency Communications Plan (ACP) that describes how RWE will actively engage with the various federal, state, and local agencies, including harbor districts (herein defined as "the Agencies") to receive their input and to provide periodic updates about the Project during each stage of development.

4.1. Summary of Engagements with the Agencies

On May 11, 2023, prior to the effective date of the Lease, the Project's Fisheries Team and other California leaseholders provided introductory presentations, answered questions, and participated in discussions during an Offshore Wind Briefing organized by CCC staff on the current status of offshore wind permitting and science needs in California. RWE has also routinely met with the other California leaseholders and the California Energy Commission (CEC) to discuss offshore wind topics related to the Assembly Bill (AB) 525 Strategic Plan, such as ports, transmission, and permitting.

RWE prepared the draft ACP, hosted an interagency meeting on the ACP, received comments and other feedback from the Agencies, and submitted the ACP to BOEM for review on September 29, 2023. The ACP describes specific strategies, tools, procedures, and protocols that the Project will use to regularly engage and communicate, share information, and solicit feedback from the Agencies. The strategies outlined in the ACP include the types of engagement activities and the frequency of proposed engagements/meetings for each stage of Project

development. The ACP includes specified points of contact (POCs) from RWE and the Agencies.

RWE is responsible for implementing the ACP, communicating Project activities and schedules to regulating and consulting agencies, and receiving their feedback throughout the development process to better inform Project development decisions. Other responsibilities of RWE associated with the ACP include, but are not limited to:

- Preparing meeting materials with the agencies (e.g., agendas, presentations, meeting summaries, etc.);
- Coordinating and leading in-person and virtual engagement meetings;
- Tracking action items and follow-up engagements and activities;
- Providing regular updates to Agency staff;
- Answering Agency questions regarding the Project and its activities; and
- Coordinating the involvement of RWE subject matter experts to provide answers, as well as providing insight into Agency concerns, recommendations, and perspectives.

As part of drafting the ACP, RWE hosted an interagency call on August 9, 2023, with the BOEM Pacific Region, NMFS West Coast Region, NOAA Office of Protected Resources (OPR), the CCC, and California State Lands Commission (CSLC), to introduce the Project and Project team, provide an overview of the development of the three communication plans, and discuss terminology around PSOs, MWMs, and similar terms used in various regulations and guidance.

Effective August 21, 2023, RWE and Vineyard Offshore executed a Memorandum of Agreement with the County of Humboldt related to the County's workforce development planning and economic development efforts. The agreement reflects the shared goals of investing in regional economic and workforce development planning in partnership with community leaders, stakeholders, and Tribal Nations.

On September 5, 2023, the ACP was submitted to approximately 40 permitting or consulting Agencies requesting feedback on the plan. Subsequently, RWE hosted a virtual agency meeting on September 27, 2023, where the Project was introduced to 30 attendees of the various Agencies and explained how the ACP was organized along with the type of feedback requested on the different stages of the Project's development. The meeting allowed RWE to receive feedback and comments from Agency attendees on the ACP. Comments were also received via email as well as through edits in track change on the ACP document itself. RWE submitted the document to BOEM per the deadline specified in the Lease. RWE is maintaining a

Comment Matrix to ensure that Agency comments (whether associated with the ACP or other aspects of the Project) are appropriately tracked.

On September 28, 2023, the Project team met in person and virtually with NMFS West Coast Region (WCR) leadership team, which included the directors of the Northwest and Southwest Fisheries Science Centers (NWFSC and SWFSC). NMFS is generally interested in receiving communications about and engaging on topics that include, but are not limited to:

- Questions/issues pertaining to NMFS trust resources. This may include issues such as buffers, seasonal restrictions, observers, boulder relocation, and mitigation, among others.
- Questions pertaining to NMFS consultations, authorizations, and other relevant permitting or acknowledgements.
- Research and monitoring projects pertaining to NMFS trust resources to ensure necessary authorizations are complete, data will be compatible with NMFS data, and Project objectives can support related consultations and assessments.
- Information on RWE's survey plans.
- Coordination on surveys (e.g., survey plans, pre-survey meetings) to discuss and coordinate on survey methods, standards and technologies and to avoid conflicts with NMFS scientific survey vessels and operations.
- Discussion of methods for NMFS to continue to collect information within the wind energy areas to mitigate any impacts on long term data collections used to advise on fisheries and protected species management.
- Information on the Site Assessment Plan (SAP), if applicable, regarding metocean buoy anchoring location to avoid hard substrate, corals and sponges, other sensitive habitat, and NMFS scientific survey sampling stations.
- Information on survey plans for proposed export cable(s) corridors.
- Project technology designs (e.g., anchoring, mooring, cable burial, spacing, etc.) being considered.

On October 10, 2023, Agencies related to fisheries management participated in an RWE meeting to receive input on the draft Joint FCP meeting that was discussed in Section 3. On October 31, 2023, RWE coordinated with NMFS to meet with science center staff and the five California offshore wind developers to provide introductions and learn about the offshore fishery surveys and research activities that NMFS conducts along the West Coast. Refer to Section 3 for further details on fisheries engagements. The RWE Permitting Team has also held semi-regular meetings with

BOEM staff on a variety of topics, mainly to seek clarification or receive confirmation on the overall process and regulatory requirements. The team met informally with Agency staff throughout this reporting period on a variety of topics.

A summary of Agency engagement activities is provided in Table 3.

Table 3. Agency Engagements During the Reporting Period

Focus of Discussion or Engagement	Party(ies)	Summary of Engagement Activities and Discussion Topics	Follow-up Actions, Activities, Outcomes
RWE Port Development Meeting (April 2023)	Crescent City Harbor District	Tour of the Crescent City port and discussion of port capabilities	Continued information sharing
Agency meeting to discuss survey planning (May 2023)	BOEM Pacific Region	Discuss possible 2023 reconnaissance survey and the process related to the three communications plans	RWE requested confirmation that clearance and shutdown zones do not apply when using an autonomous underwater vehicle (AUV) that is not visible, and on the MWM/PSO requirement for vessel activities at the sea surface
Introductory meeting (May 2023)	SWFSC and NWFSC	The Fisheries Team met with Science Center leadership to discuss the Project	Continued information sharing
Joint participation with California leaseholders to introduce the RWE Project and fisheries outreach (May 2023)	CCC, RWE, Equinor, Invenergy, Ocean Winds, and Vineyard Wind	The Fisheries Team participated in an Offshore Wind Briefing organized by CCC staff to discuss the current status of offshore wind permitting and science needs in California	Continued information sharing on offshore wind
Agency meeting to discuss survey planning (June 2023)	BOEM Pacific Region	Update on RWE's 2023 survey plan and timeline; update on Tribal meetings and status of the NATCP; and address terminology related to MWM/PSO and trained observer	BOEM stated that the communications plans need to be complete (i.e., meetings conducted, input received, and submitted to BOEM) prior to submitting the survey plan for review; BOEM will also evaluate the AUV equipment proposed under the context of the Endangered Species Act and consult with NMFS, if necessary
Introductory meeting (June 2023)	CDFW	The Fisheries Team met with CDFW to provide introductions and discuss communications	Continued information sharing
Agency meeting to discuss fisheries issues (July 2023)	CCC	The Fisheries Team met with CCC staff to discuss fisheries and science/monitoring efforts	Continued information sharing

Focus of Discussion or Engagement	Party(ies)	Summary of Engagement Activities and Discussion Topics	Follow-up Actions, Activities, Outcomes
Inter-agency meeting to present the Project and receive feedback on any early concerns (August 2023)	BOEM Pacific Region, NMFS WCR, NOAA OPR, CCC, CSLC	Overview of current survey planning and timeline; discuss terminology for observers with respect to AUV surveys; status on draft communication plans; provide updates on other engagements	CCC requested to be included in conversations with NMFS regarding sound sources and marine mammal observers; the Agencies also requested updates on the California Independent System Operator (CAISO) process and how that might impact cable corridor planning
Agency meeting to discuss fisheries issues (August 2023)	Oregon Department of Fish & Wildlife (ODFW)	The Fisheries Team met with ODFW to provide introductions and discuss stakeholder identification and communications	Continued information sharing
Agency meeting to solicit feedback on RWE's ACP (September 2023)	CSLC, CGS, NCUAQMD, BOEM, USEPA Region 9, NOAA OPR, Humboldt County, NOAA NMFS, CA-OPR, CDFW, CNRA, OPC, Humboldt Bay Harbor District, DTSC, USCG, North Coast RWCD, USFWS, North Coast Regional Water Board	Introduce Project and receive feedback from the Agencies on the ACP	RWE updated the ACP to incorporate comments and feedback from the Agencies; RWE will also periodically update the ACP as lessons are learned and suggestions for improvements to the process are received by the Agencies
Present Project to the NOAA Leadership Team (September 2023)	NMFS WCR, NWFSC, SWFSC	Update on Survey Plan and communications plans; internal process for assessing turbine technology design; fisheries engagement, monitoring, and research	NMFS interested in receiving communications about and engaging in a number of topics (refer to the bullet list, above, in Section 4.1)
Receive information on West Coast fisheries surveys (October 2023)	NWFSC, SWFSC, RWE, Equinor, Invenergy, Ocean Winds, and Vineyard Wind	Joint meeting with the California leaseholders and NMFS to provide an overview of the fisheries research and resource surveys conducted by NWFSC and SWFSC	NMFS provided developers with POCs for surveys to facilitate coordination with NMFS surveys; there will be continued dialogue to identify best practices to avoid, minimize and mitigate impacts on federal surveys; and continued dialogue about research and monitoring needs for the project and region
RWE-hosted meeting on the FCP (October 2023)	NMFS WCR, NWFSC, and SWFSC	This meeting is reflection in Section 3, but is also listed here because it is specific to the Agencies that were in attendance at that meeting	Incorporated feedback into draft FCP; established points of contact for fisheries agencies; initiated contact with key constituents to support coastwide fisheries engagement; planned participation in the CCC Section 7c Fisheries Working Group

Focus of Discussion or Engagement	Party(ies)	Summary of Engagement Activities and Discussion Topics	Follow-up Actions, Activities, Outcomes
Receive information on West Coast fisheries surveys (October 2023)	NWFSC, SWFSC, RWE, Equinor, Invenergy, Ocean Winds, and Vineyard Wind	Joint meeting with the California leaseholders and NMFS to provide an overview of the fisheries research and resource surveys conducted by NWFSC and SWFSC	NMFS will provide developers with POCs for surveys to facilitate coordination with NMFS surveys; the groups will continue dialogue to identify best practices to avoid, minimize and mitigate impacts on federal surveys; the groups will also continue to discuss research and monitoring needs for the project and region
Agency meeting to discuss RWE's Qualified Marine Archaeologist (October 2023)	BOEM Pacific Region, Tetra Tech, Geosyntec, Full Fathom Five Marine	A brief introduction to BOEM of RWE's marine archaeology contractors and their areas of responsibility to allow them to request BOEM data and reports	None noted
RWE port development meetings (ongoing)	Humboldt Bay Harbor Recreation & Conservation District	Introductory and engagement meetings associated with port development	RWE will continue to provide additional engagements and follow-up
Share Project plans and coordinate local engagement and needs (ongoing)	County of Humboldt	Project details, economic development, local needs	Continued engagement and coordination
Share Project plans and port development (ongoing)	City of Eureka	Meetings with City Councilors and staff related to Project details and port development	Continued engagement and coordination

4.2. Potential Project Effects Raised by the Agencies

Thus far, the majority of engagements with the Agencies involved introducing the Project, Project teams, and upcoming Project activities. During the ACP agency meeting, the following questions were raised by the Agencies (in italics). Information is provided below on how those questions were addressed.

- Will the geophysical and geotechnical (G&G) data be made available to the public?*

RWE is open to collaboration and transparency with its environmental data. However, raw G&G data is proprietary for specific periods of times depending on data type. Some data will be made available in the analysis and assessments provided in environmental documents and in the COP, and specific data requests for earlier G&G data sharing may be considered under data sharing agreements with the Agencies.

- Will a fisheries person be on board the survey vessels, and will there be coordination with commercial fisherman to reduce impacts to fishing gear? RWE's approach to avoiding impacts to fisheries during our offshore survey campaigns is comprehensive, and includes close collaboration and coordination and frequent communication with the fishing industry. The RWE Fisheries Team has worked with local and regional fisheries to develop a comprehensive understanding of the operational details and seasonality of the fisheries in the project area to facilitate a coordinated approach during survey campaigns. RWE will conduct an informed assessment of the risk of interacting with fisheries and fishing gear during survey operations, and will plan to avoid and mitigate risks as appropriate. RWE may utilize AUVs to conduct geophysical survey operations, where practicable, to minimize risks of interactions with fisheries. RWE may also employ commercial fishermen as onboard fisheries liaisons (OFLs) and as scout vessel captains, when necessary and appropriate during survey operations, to facilitate at-sea coordination with fishing activities and to avoid fishing gear. RWE will maintain close communications with the fishing industry in advance of and throughout RWE survey campaigns, and will utilize a wide range of communications tools including fisheries notices distributed to the fishing community through our fisheries communications network, Local Notices to Mariners (USCG), pre-survey calls and meetings, and regular communications with fisheries associations. RWE will also coordinate survey operations with other Agencies.

Additional written comments by the Agencies were received on the ACP, some of which were not specific to agency communications (similar to the bullets above), but were related to activities that could occur in upcoming Project stages. A comment matrix is tracking all comments received.

4.3. Upcoming Engagement Activities with the Agencies

During the next reporting period, the Project team anticipates the following engagement activities are likely to occur with the Agencies on the ACP:

- The ACP is a living document that will incorporate lessons learned and best practices based on collaborations between RWE and the Agencies. RWE will update the ACP based on feedback received from BOEM's review of the plan and any additional input by the Agencies.
- RWE is in the process of creating a Project website that is expected to be active in the next reporting period. The ACP will be publicly available on the website.
- RWE will host a meeting with interested Agencies on the 2024-2025 G&G Survey Plan (refer to Section 6 for additional detail). Similar Survey Plan meetings will be scheduled with Tribes/Tribal Nations and with the fishing industry in the next

reporting period, prior to the start of survey activities (refer to Sections 2 and 3 for additional details).

5.0 Other Stakeholders

Other stakeholder entities that could potentially be affected by Project activities may include:

- Coastal communities;
- Educational and research institutions;
- Environmental and public interest non-governmental organizations;
- Mariners and the maritime industry;
- Ocean users;
- Submarine cable operators; and
- Underserved communities, as defined in Section 2 of Executive Order 13985.

Not all of these groups will be contacted during each Progress Report and some engagements may be captured in the activities summarized in other sections.

5.1. Summary of Engagement Activities with Other Stakeholders

A summary of engagement activities held with other stakeholders is provided in Table 4. In general, the focus of these engagement meetings has been to introduce the Project and provide updates on development progress. In addition to meetings held directly between RWE and stakeholders, RWE participates in other working groups and meetings that bring together large groups of stakeholders. These working groups and meetings provide less direct interaction so individual stakeholders present are not listed below so as to not insinuate that RWE has met directly with those stakeholders (although the working groups and meetings along with their organizers may be listed below). However, there is still great value in participating in those working groups and meetings as RWE is able to directly hear stakeholder concerns and questions about offshore wind.

Table 4 Other Stakeholder Engagements During the Reporting Period

Focus of Discussion or Engagement	Party(ies)	Summary of Engagement Activities and Discussion Topics	Follow-up Actions, Activities, Outcomes
Introductory meeting and informal discussions (February and June 2023; ongoing)	Redwood Region Climate and Community Resilience (CORE) Hub	Introduce Project and preliminary Project details; discuss community needs and support	Continued engagement and collaboration
Project presentation (June 2023)	Community Economic Resiliency Consortium	Present Project details and development plans	Continued engagement and meeting participation
Share Project plans and discuss local needs (June and July 2023; ongoing)	Environmental Protection Information Center (EPIC)	Project details, local needs	Continued engagement and coordination
Engagement Meetings (June, July, and September 2023; ongoing)	Humboldt Waterkeeper (formerly, Humboldt Baykeeper)	Present Project details and discuss environmental topics related to the bay	Continued engagement and coordination
Engagement Meeting (July 2023)	Northern Humboldt Unified School District	Meeting to discuss Project plans and coordination opportunities	Continued engagement and coordination
Project presentation (July 2023)	Redwood Region Audubon Society Subcommittee	Discuss Project details and development plans	Continued engagement
Shared Project plans and discussed community needs (July 2023; ongoing)	Friends of the Dunes	Project details, local needs	Continued engagement and collaboration
Project presentation (August 2023)	Cal Cities Redwood Region	Project details and development plans	Continued engagement and coordination
Project presentation (August 2023)	Arcata Sunrise Rotary	Present Project details and development plans	Continued engagement
RWE sponsored Eureka Street Art Festival in collaboration with the City of Eureka (August 2023)	Eureka Street Art Festival	Collaboration	Continued engagement
RWE sponsorship of LatinoNet and Cal Poly Humboldt's Festejando Nuestra Comunidad event (September 2023)	LatinoNet	Project details and development plans	Continued engagement
RWE sponsorship and attendance at conference (September 2023)	Arcata Economic Development Corporation (AEDC) Redwood Economic Development Conference	Project details and development plans	Continued engagement

Focus of Discussion or Engagement	Party(ies)	Summary of Engagement Activities and Discussion Topics	Follow-up Actions, Activities, Outcomes
Project presentation (October 2023)	Fortuna Sunrise Rotary Club	Presentation to the club about the Project and receive questions on offshore wind plans	Continued engagement
Collaboration and expertise sharing (ongoing)	Cal Poly, Humboldt (CPH)	Meetings with academic departments related data collection, collaboration	Continued engagement meetings and coordination
Technical expertise, community engagement, and collaboration (ongoing)	Schatz Energy Research Center at CPH	Meetings related to transmission, data collection, academic programs	Continued engagement meetings and collaboration
Share Project plans and discuss collaboration on community needs and events (ongoing)	Greater Eureka Chamber of Commerce	Project details, local economic development	Continued engagement and coordination
RWE volunteerism and community support (ongoing)	Food for People	Volunteer opportunities and annual support for food bank operations	Continued engagement and volunteerism
Meeting to discuss collaborative opportunities (ongoing)	Arcata Chamber of Commerce	Project details, collaboration	Continued engagement and collaboration
Virtual call with all five California Offshore Wind Leaseholders and both state (CA) and local environmental groups (May, July, and September 2023)	While these meetings are administered by staff of the Natural Resources Defense Council, approximately ten environmental groups are represented	Shared interests and goals between the offshore wind industry and environmental groups	Ongoing meetings are scheduled and this effort is becoming more formal over time
Pacific Northwest National Laboratory (PNNL)/National Renewable Energy Laboratory (NREL) West Coast Offshore Wind Transmission Study Environment and Siting Working Group (September 2023)	While these meetings are administered by staff of PNNL and NREL, approximately five environmental groups are represented	Discussion of environmental impacts of PNNL/NREL's planning efforts re: offshore wind transmission on the West Coast.	Ongoing but the transmission study is expected to be completed in early 2025 and will reflect stakeholder input

5.2. Potential Project Effects Related to Other Stakeholders

RWE has identified the following list of potential concerns raised by other stakeholders during the reporting period:

- Identification of contaminated soils around the port.
- Potential changes to hydrodynamics stemming from the presence of wind turbine generators and foundations that could then potentially change upwelling and other subsequent processes (i.e., changes in plankton distribution).
- Direct impacts to wildlife resulting from the presence of structures (specifically marine mammals interacting with suspended cables and birds/bats interacting with turbine blades).
- Impacts to areas on/near shore when an eventual cable landfall location is determined (both physical disturbance and electromagnetic field impacts).
- Impacts of construction activities (specifically vessel presence).
- Concerns that educational/research institutions and NGOs have limited capacity to work on the full amount of offshore wind topics that are new to California.
- Positive impressions of the promise of offshore wind to mitigate the impacts of climate change.
- Promising opportunities for offshore wind developers to partner with NGOs to collaborate on shared interests and explore aspects of offshore wind infrastructure that can drive biodiversity (such as foundations intentionally designed to maximize artificial reef effect) and co-location of other marine uses that will benefit local habitats.
- Increased strain on housing and other resources that are already impacted county-wide.
- Positive impressions of offshore wind developing as an ocean use with increased regulatory requirements on environmental performance as compared to other historic and current uses in the region.

5.3. Upcoming Engagement Activities With Other Stakeholders

During the next reporting period, RWE anticipates continuing its engagement with interested parties including:

- Engaging with the communities in and around Humboldt County including the opening of a local RWE office where people can visit and get information or have their questions answered about offshore wind.
- Continuing to participate in conferences, community forums, stakeholder events and other activities/events to educate stakeholders and communities.

- Continuing to develop relationships within the relevant communities associated with the Project including the development of strategies for minimizing barriers to participation.
- Participating in a collaborative working group that brings together all California offshore wind leaseholders with national, state, and local NGOs that are working on offshore wind issues.
- Continuing to collaborate directly with individual NGOs, academic institutions, and other stakeholders on Project-specific opportunities.

6.0 Survey Planning

During the reporting period, RWE prepared a 2024-2025 G&G Survey Plan, which outlines a comprehensive strategy aimed at acquiring G&G data to characterize and mitigate potential geohazards on or under the seabed, and to assess biological conditions in the Lease Area and along a future export cable route(s).

The two-year site investigation period will consist of several discrete phases whereby data and information from each phase will be used to inform the phase that follows. Activities include desktop studies, geophysical surveys of the seabed, geotechnical collections and testing of sediment samples, evaluation and assessment of geotechnical engineering properties, the collection and/or purchase of metocean data, and documentation of the results in a written report that will be submitted with the COP.

6.1. Summary of Engagement Activities Related to Survey Planning

During the reporting period, RWE consulted with BOEM on various aspects to survey planning that culminated in the 2024-2025 G&G Survey Plan submission to BOEM on November 13, 2023, for its review and comment. The Survey Plan details a G&G campaign, which includes surveying in federal waters of the Lease Area and in federal and state waters along possible export cable route(s). The first phase of Survey Plan activities is expected to start during the second quarter (Q2) of 2024.

6.2. Potential Project Effects Related to Survey Planning

RWE has not yet engaged with Tribes/Tribal Nations and other parties on its 2024-2025 G&G Survey Plan. There may be concerns about the potential for conflicts with commercial vessel traffic or tug and tow vessels in nearby traffic lanes when entering or exiting Humboldt Bay, transiting to/from the Lease Area, and performing survey activities or transiting between ports. RWE is assessing the timing of proposed survey activities and the Dungeness crab fishery. The recreational fishery for

Dungeness crab is currently open from November 4, 2023, through July 30, 2024, in Del Norte, Humboldt, and Mendocino counties, while the commercial fishery for Dungeness crab remains closed.

For these reasons, RWE will require survey contractor(s) to use the established “Crabber/Towboat Lane” when transiting in and out of the Port of Humboldt Bay.⁶ RWE has also adjusted its proposed schedule to avoid nearshore survey activities during the height of recreational or commercial Dungeness crab season.

In meetings with federal and state agencies, there were questions about how the cable corridors will be considered and what constraints might be included in making that decision. As the Project is in early stages of development, exact cable corridors have not been specified. The geophysical data collected during the survey will be used to assess potential cable routes.

6.3. Upcoming Engagement Activities Related to Survey Planning

RWE will conduct transparent and frequent communication to ensure that the impact of survey activities with other ocean users is minimized to the extent practicable. The three communications plans (NATCP, FCP, and ACP), detail the procedures RWE will follow to engage with these parties and others so they are informed of survey activities. Lease Addendum “C”, 5.6 requires that RWE will coordinate the G&G Survey Plan with the CCC and other state agencies. Any RWE contractor(s) for the survey works in state waters will also be approved by California’s geophysical survey permit program (<https://www.slc.ca.gov/ogpp/>).

Prior to commencement of any survey activity, RWE will provide at least two weeks’ notice to applicable ocean users (including Tribal Fisheries Departments), which complies with Lease Addendum “C”, 3.1.2 and 6.4. RWE will work with the USCG to issue Local Notices to Mariners prior to and during survey activities. Information on survey activities will be posted to the Project website. In parallel, the RWE Fisheries Team will continue outreach and engagement efforts during meetings with constituents and fishery participants.

In accordance with Lease Addendum “C”, 3.1.5, the Progress Reports must include an update regarding progress in executing the activities included in the Survey Plan and include, as an enclosure, an updated plan that accounts for any modifications in schedule.

⁶<https://wsg.washington.edu/community-outreach/outreach-detail-pages/crabbertowboat-lane-agreements-download-charts-data-and-meetings/>

Lease Addendum “C”, 4.2.5 requires RWE to establish and maintain early contact and coordination with the appropriate Department of Defense command headquarters to avoid or minimize the potential to conflict with military operations.

Lease Addendum “C”, 7.4 specifies that RWE and its Qualified Marine Archaeologist will meet with Tribes/Tribal Nations to discuss the Survey Plan and consider requests to monitor portions of the archaeological survey and the geotechnical exploration activities, including the visual logging and analysis of geotechnical samples (e.g., cores, etc.). This meeting will be scheduled in the next reporting period and at least 30 calendar days prior to commencement of survey activities. The meeting(s) will be at a location and time that affords the participants a reasonable opportunity to participate (refer also to Section 2).

During the next reporting period, RWE plans to submit an Incidental Harassment Authorization (IHA) application to NOAA OPR. The IHA application is associated with the acquisition of geophysical data in Q4 2024 that may require using equipment that operates at regulated frequencies (i.e., less than 180 kilohertz).

7.0 Transmission Planning

The relatively small population in the Humboldt County region is served by limited transmission grid infrastructure that is often subject to power outages. The rugged geography creates challenges to bringing electricity to remote valleys to this day. Existing transmission lines connecting the region’s small load to the CAISO electric grid have very limited capacity. Therefore, significant investment in upgrading and expanding the region’s transmission infrastructure is needed to connect large capacity offshore wind projects. Transmission system build out and upgrades would ensure local offshore wind resources can deliver significant amounts of clean energy to the bulk electric system supporting statewide clean energy goals while also improving local electric system reliability.

7.1. Summary of Engagements Related to Transmission Planning

RWE has been an active participant in California’s Transmission Planning Process (TPP), a regulated proceeding by which the state’s independent transmission system operator, CAISO, evaluates and plans new transmission upgrades on a two-year rolling cycle.

7.2. Potential Project Effects Related to Transmission Planning

With the offshore wind lease areas and interconnection queue positions filed with CAISO, RWE hopes that demand will trigger transmission expansion project approval to Humboldt County.

7.3. Upcoming Engagement Activities Related to Transmission Planning

RWE anticipates that transmission upgrade and expansion plans for the current TPP 2023-2024 planning cycle will be proposed in Q1 2024 and approved in Q2 2024. Any new transmission expansion/upgrades approved for Humboldt County would be executed by a transmission developer, who would be selected on a competitive basis to design, permit, finance, construct, own, and maintain the transmission facilities. It is important to differentiate between a new Humboldt transmission project that is part of the CAISO bulk electric system, and RWE's offshore wind Project and associated Project transmission infrastructure. The two transmission assets will be entirely separate but mutually dependent projects, each with its own development process and permitting requirements. However, there may be potential areas of overlap with stakeholder engagement.

Approved new transmission infrastructure for Humboldt County should also identify the Point of Interconnection (POI) for the Project. Specification of the POI would allow the Project to assess potential export cable routes connecting the Project to the POI. As transmission planning proceeds, the Project team will engage with Tribes/Tribal Nations and other interested parties to assess potential transmission corridor impacts and plan survey activities.

RWE will continue to participate on the Pacific Northwest National Laboratories (PNNL) and National Renewable Energy Laboratory (NREL) West Coast Offshore Wind Transmission Study's Planning and Environment & Siting Sub-Group, which brings together a variety of entities interested in and working on the potential development of a regionally coordinated offshore transmission strategy.

Appendix A

Project Team Contact Information

Name/Title	Role	Contact Information
Cynthia Pyc Director of Permitting	Oversees U.S. permitting, environmental affairs, and Tribal engagement	Cynthia.Pyc@rwe.com (512) 500-1933
Rob Mastria California Project Director	Overall responsibility for delivery of the Project	Robert.Mastria@rwe.com (617) 515-4897
James Sun Development Director	Oversees development of the Project including market strategy	James.Sun@rwe.com (617) 530-0294
Carlaine Johnson Permitting Manager	Manages federal, state, and local permitting of the California Project; primary POC for the Agency Communications Plan	Carlaine.Johnson@rwe.com (312) 241-8052
Andrea Hansen Tribal Relations Manager	Manages Tribal engagement on the U.S. West Coast; primary POC for the Native American Tribes Communications Plan	Andrea.Hansen@rwe.com (707) 267-8470
Joel Southall Manager of Environmental Affairs & Sustainability	Collaborates with NGOs, academic institutions, regulators, and other entities focusing on the environmental impacts/benefits of offshore wind development	Joel.Southall@rwe.com (857) 335-3671
Rick Robins Marine Affairs Manager	Oversees marine affairs and commercial and recreational fisheries engagement of the Project; POC for the Fisheries Communications Plan; Acting Fisheries Liaison	Rick.Robins@rwe.com (757) 876-3778
Deirdre Boelke Fisheries Manager	Manages commercial and recreational fisheries engagement; primary POC for the Fisheries Communications Plan	Deirdre.Boelke@rwe.com (978) 518-0638
Kim Gordon Fisheries Consultant	Fisheries support (contractor)	Kim@resourcelogicconsulting.com (858) 204-6175
Fisheries Liaison	To be determined	TBD
Ciara Emery Local Government and Stakeholder Engagement Manager	Manages community and stakeholder engagement activities.	Ciara.Emery@rwe.com (707) 981-6579
Andrew Meredith Director of Labor Relations	Primary POC for labor engagement activities	Andrew.Meredith@rwe.com

Appendix B

Relevant Fisheries Constituents

Table B-1. Relevant Fisheries Constituents⁷

Commercial	
Groundfish Fishery (groundfish, bottomfish, rockfish)	Salmon Fishery
Highly Migratory Species Fishery	Dungeness Crab Fishery
Pacific Halibut Fishery	Hagfish Fishery
Market Squid Fishery	Pink Shrimp Fishery
Coonstripe Shrimp Fishery	Spot Prawn Fishery
Perch Fishery	Smelt Fishery
Sea Urchin Fishery	Live Bait Fishery
Herring Fishery	Fishing Associations
Seafood Processors	Shoreside Fishing Businesses and Industry Services
Additional Fishing Industry Organizations and Associations	--
Recreational	
Highly Migratory Species Fishery	Salmon Fishery
Pacific Halibut Fishery	California Halibut Fishery
Groundfish Fishery (groundfish, bottomfish, rockfish)	Dungeness Crab Fishery
Eureka, CA Recreational Charter Captains	Trinidad, CA Recreational Charter Captains
Crescent City, CA Recreational Charter Captains	Shelter Cove, CA Recreational Charter Captains
Recreational Fishing Associations and Clubs	Shoreside Fishing Businesses, Services and Suppliers

⁷ These are the groups that have been initially identified for outreach and engagement. Others will be added as the Project progresses

State and Federal Agencies, Advisory Bodies

Pacific Fishery Management Council	California Department of Fish and Wildlife
Oregon Department of Fish & Wildlife	Washington Department of Fish and Wildlife
California Coastal Commission	National Marine Fisheries Service (NMFS)
NMFS Northwest Fisheries Science Center	NMFS Southwest Fisheries Science Center
California Coastal Commission Section 7c Fisheries Working Group	--

Academic and Research

Academic and Research Institutions or Programs	--
--	----
